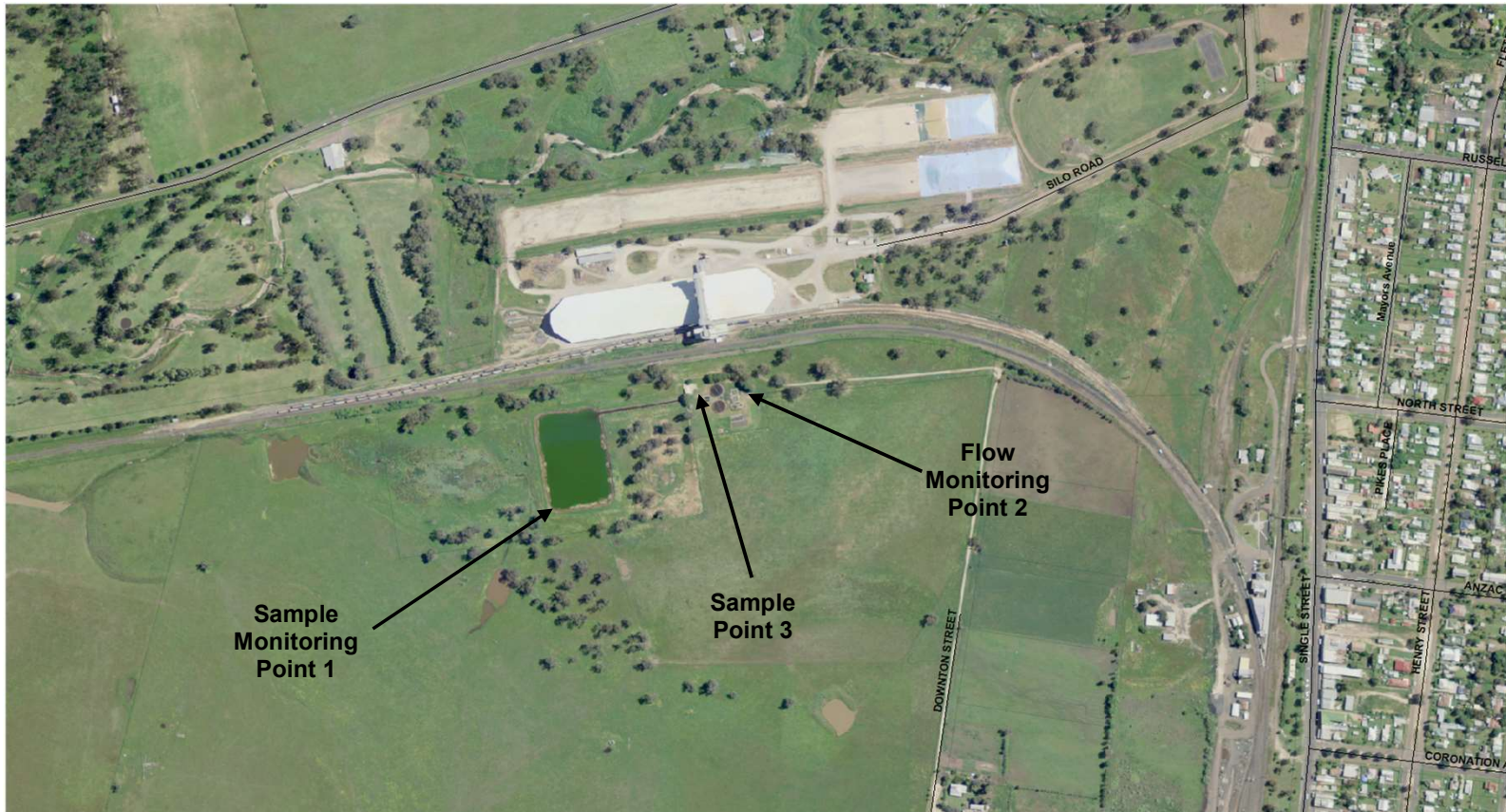


Werris Creek Sewage Treatment Plant - Environment Protection Licence 575

Full epa License at:

<https://www.epa.nsw.gov.au/licensing-and-regulation/public-registers>

Licensee Name: Liverpool Plains Shire Council
Licensee Address: PO Box 152 Quirindi NSW 2343
Werris Ck STP Address: Off Downton St, Werris Ck NSW 2340
Licence Anniversary: 31st October



Werris Creek Sewage Treatment Plant - EPL 575 - Yearly Summaries

Anniversary Date: 31st October

Point 1 Yearly Summary 2017/18

(Note that monitoring frequency is monthly or less, so only a yearly summary will be meaningful)

Pollutant	Units	90 percentile concentration limit	Monitoring frequency required by the Licence	Number of data points for the year	Minimum value	Mean	Maximum value	Median		Exceedences (yes/no)	Count of 90 percentile exceedences	Exceedance acceptable limit	Comments
Biological Oxygen Demand ₅	mg/L	20	Monthly	23	6	22	42	19		yes	11	3	exceeded 90 percentile limit due to high Algae content in maturation ponds
Total Suspended Solids	mg/L	30	Monthly	23	10.00	81.8	180.00	76.00		yes	19	3	exceeded 90 percentile limit due to high Algae content in maturation ponds
Oil & Grease	mg/L	10	Monthly	23	5.00	5.0	5.00	5.00		no	0	3	within allowable 90%ile. The cause of the high oil and greese is undetermined
pH	pH Value	-	Monthly	23	8.50	10.2	11.00	10.40		-			
Ammonia as Nitrogen	mg/L	-	Quarterly	23	0.10	1.6	9.34	0.90		-			
Total Nitrogen	mg/L	-	Every 6 months	23	6.40	18.1	32.10	18.00		-			
Total Phosphorus	mg/L	-	Every 6 months	23	0.36	2.5	5.75	2.55					
Conductivity	uS/cm	-	Monthly	23	0.82	1.0	1.12	0.95		-			
Faecal Coliforms	cfu/100mL	-	Monthly	23	2.00	472.7	5700.00	24.00		-			

Point 1 Yearly Summary 2018/19

(Note that monitoring frequency is monthly or less, so only a yearly summary will be meaningful)

Pollutant	Units	90 percentile concentration limit	Monitoring frequency required by the Licence	Number of data points for the year	Minimum value	Mean	Maximum value	Median	90%ile calculation	Exceedences (yes/no)	Count of 90 percentile exceedences	Exceedance acceptable limit	Comments
Biological Oxygen Demand ₅	mg/L	20	Monthly	13	4	14	40	11	22	yes	3	2	exceeded 90 percentile limit due to high Algae content in maturation ponds
Total Suspended Solids	mg/L	30	Monthly	13	5	64	140	66	128	yes	9	2	exceeded 90 percentile limit due to high Algae content in maturation ponds
Oil & Grease	mg/L	10	Monthly	13	5.00	5.2	8.00	5.00	5.0	no	0	2	within allowable 90%ile. The cause of the high oil and greese is undetermined
pH	pH Value	-	Monthly	13	8.40	9.7	10.8	9.9		-			
Ammonia as Nitrogen	mg/L	-	Quarterly	13	0.32	3.0	9.35	1.48		-			
Total Nitrogen	mg/L	-	Every 6 months	13	9.41	13.0	18.90	11.30		-			
Total Phosphorus	mg/L	-	Every 6 months	13	1.45	2.81	4.96	2.18					
Conductivity	uS/cm	-	Monthly	13	0.97	1.1	1.26	1.10		-			
Faecal Coliforms	cfu/100mL	-	Monthly	13	1.00	949	11000	4		-			

Point 1 Yearly Summary 2019/20

(Note that monitoring frequency is monthly or less, so only a yearly summary will be meaningful)

Pollutant	Units	90 percentile concentration limit	Monitoring frequency required by the Licence	Number of data points for the year	Minimum value	Mean	Maximum value	Median	90%ile calculation	Exceedences (yes/no)	Count of 90 percentile exceedances	Exceedance acceptable limit	Comments
Ammonia	mg/L	-	Monthly	13	0.08	1.6	2.97	1.64		-			
Biological Oxygen Demand ₅	mg/L	20	Monthly	13	8	14	24	15	19	yes	1	2	exceeded 90 percentile limit due to high Algae content in maturation ponds
Conductivity	uS/cm	-	Monthly	13	0.71	0.9	1.54	0.85		-			
Faecal Coliforms	cfu/100mL	-	Monthly	13	2.00	1467	12000	42		-			
Nitrogen (Total)	mg/L	-	Monthly	13	3.40	14.8	24.30	13.70		-			
Oil & Grease	mg/L	10	Monthly	13	5.00	5.1	6.00	5.00	5.0	no	0	2	within allowable 90%ile.
pH	pH Value	-	Monthly	13	8.55	9.4	10.2	9.6		-			
Phosphorus (total)	mg/L	-	Monthly	13	1.41	2.76	4.24	2.49		-			
Total Suspended Solids	mg/L	30	Monthly	13	23	95	310	99	151	yes	11	2	exceeded 90 percentile limit due to high Algae content in maturation ponds

Point 1 Yearly Summary 2020/21

(Note that monitoring frequency is monthly or less, so only a yearly summary will be meaningful)

Pollutant	Units	90 percentile concentration limit	Monitoring frequency required by the Licence	Number of data points for the year	Minimum value	Mean	Maximum value	Median	90%ile calculation	Exceedences (yes/no)	Count of 90 percentile exceedances	Exceedance acceptable limit	Comments
Ammonia	mg/L	-	Monthly	13	0.05	2.1	6.82	1.36		-			
Biological Oxygen Demand ₅	mg/L	20	Monthly	13	2	22	51	23	45	yes	7	2	exceeded 90 percentile limit due to high Algae content in maturation ponds
Conductivity	uS/cm	-	Monthly	13	0.57	0.7	0.91	0.76		-			
Faecal Coliforms	cfu/100mL	-	Monthly	13	2.00	113	520	38		-			
Nitrogen (Total)	mg/L	-	Monthly	13	7.10	16.3	34.20	14.10		-			
Oil & Grease	mg/L	10	Monthly	13	5.00	5.0	5.00	5.00	5.0	no	0	2	within allowable 90%ile.
pH	pH Value	-	Monthly	13	8.34	9.2	9.9	9.3		-			
Phosphorus (total)	mg/L	-	Monthly	13	1.59	3.80	14.90	3.08		-			
Total Suspended Solids	mg/L	30	Monthly	13	9	90	228	62	145	yes	12	2	exceeded 90 percentile limit due to high Algae content in maturation ponds

Point 3 Yearly Summary 2017/18

(Note that monitoring frequency is monthly or less, so only a yearly summary will be meaningful)

Pollutant	Units	90 percentile concentration limit	Monitoring frequency required by the Licence	Number of data points for the year	Minimum value	Mean	Maximum value	Median		Comments
Biological Oxygen Demand ₅	mg/L	-	Monthly	23	8	16.0	35	15		
Total Suspended Solids	mg/L	-	Monthly	23	6.0	13.2	40.0	12.0		
pH	pH Value	-	Monthly	23	7.00	7.4	7.70	7.40		
Total Nitrogen	mg/L	-	Monthly	23	8.20	41.1	56.50	42.90		
Total Phosphorus	mg/L	-	Monthly	23	5.49	6.9	8.21	7.11		
Conductivity	uS/cm	-	Monthly	23	0.68	1.0	1.09	0.99		

Point 3 Yearly Summary 2018/19

(Note that monitoring frequency is monthly or less, so only a yearly summary will be meaningful)

Pollutant	Units	90 percentile concentration limit	Monitoring frequency required by the Licence	Number of data points for the year	Minimum value	Mean	Maximum value	Median		Comments
Biological Oxygen Demand5	mg/L	-	Monthly	13	6	17.4	62	12		
Total Suspended Solids	mg/L	-	Monthly	13	7	13	24	13		
pH	pH Value	-	Monthly	13	7.00	7.2	8.09	7.20		
Total Nitrogen	mg/L	-	Monthly	13	39.20	43.1	47.70	42.70		
Total Phosphorus	mg/L	-	Monthly	13	6.30	7.0	7.90	7.08		
Conductivity	uS/cm	-	Monthly	13	1.03	1.11	1.20	1.12		

Point 3 Yearly Summary 2019/20

(Note that monitoring frequency is monthly or less, so only a yearly summary will be meaningful)

Pollutant	Units	90 percentile concentration limit	Monitoring frequency required by the Licence	Number of data points for the year	Minimum value	Mean	Maximum value	Median		Comments
Biological Oxygen Demand5	mg/L	-	Monthly	13	3	11.7	21	12		
Conductivity	uS/cm	-	Monthly	13	0.67	1.02	1.27	1.05		
Nitrogen (total)	mg/L	-	Monthly	13	15.00	43.3	65.00	43.70		
pH	pH Value	-	Monthly	13	7.17	7.8	8.28	7.91		
Phosphorus (total)	mg/L	-	Monthly	13	2.50	6.2	8.10	6.74		
Total Suspended Solids	mg/L	-	Monthly	12	7	16	34	15		

Point 3 Yearly Summary 2020/21

(Note that monitoring frequency is monthly or less, so only a yearly summary will be meaningful)

Pollutant	Units	90 percentile concentration limit	Monitoring frequency required by the Licence	Number of data points for the year	Minimum value	Mean	Maximum value	Median		Comments
Biological Oxygen Demand5	mg/L	-	Monthly	13	2	23.1	160	12		
Conductivity	uS/cm	-	Monthly	13	0.69	0.88	1.13	0.90		
Nitrogen (total)	mg/L	-	Monthly	13	29.00	44.3	61.10	44.10		
pH	pH Value	-	Monthly	13	7.37	7.6	7.87	7.64		
Phosphorus (total)	mg/L	-	Monthly	13	1.20	5.7	9.98	5.75		
Total Suspended Solids	mg/L	-	Monthly	13	5	20	36	17		

Final Effluent Werris Creek Sewer Treatment Plant - Monitoring Point 1

Anniversary Date: 31st October

Date Sampled	Date Results Report Obtained	Laboratory Report No.	Date uploaded to website	Biological Oxygen Demand ₅ mg/L	Total Suspended Solids mg/L	Oil & Grease mg/L	pH pH Value	Ammonia as Nitrogen mg/L	Total Nitrogen mg/L	Total Phosphorus mg/L	Conductivity uS/cm	Faecal Coliforms cfu/100mL	Comments
12/11/2013	21/11/2013	131837		10	9	5	7.50	2.67	29.70	6.28	0.67	50000	
26/11/2013	06/12/2013	131915		17	14	5	7.60	3.03	39.00	6.91	0.92	1400000	
10/12/2013	23/12/2013	132019		16	97	5	10.70	0.05	8.10	0.77	0.86	<2	TSS impacted by maturation pond algae
17/12/2013	02/01/2014	132061		20	138	5	11.10	0.40	11.70	1.42	0.94	<2	TSS impacted by maturation pond algae
02/01/2014	09/01/2014	140003		38	222	5	11.00	0.37	14.00	2.25	0.94	<2	TSS impacted by maturation pond algae
14/01/2014	22/01/2014	140080		7	4	5	7.70	0.06	20.10	7.62	0.98	<5	
28/01/2014	04/02/2014	140157		16	72	5	10.60	0.46	9.20	0.84	0.99	<2	TSS impacted by maturation pond algae
11/02/2014	21/02/2014	140254		14	102	5	10.80	0.23	7.60	0.87	1.09	<2	TSS impacted by maturation pond algae
25/02/2014	07/03/2014	140330		12	85	5	10.80	<0.03	6.40	0.94	0.96	10	TSS impacted by maturation pond algae
11/03/2014	20/03/2014	140431		13	124	40	10.50	0.10	6.70	1.10	0.88	70	TSS impacted by maturation pond algae
25/03/2014	02/04/2014	140524		9	29	40	10.00	0.50	5.80	0.80	0.79	1200	
08/04/2014	17/04/2014	140619		12	28	5	9.70	0.50	4.80	1.30	0.76	220	
02/04/2014	05/05/2014	140696		9	31	5	9.10	2.10	6.30	2.45	0.88	2200	TSS impacted by maturation pond algae
06/05/2014	06/05/2014	140785		11	73	5	10.60	0.20	12.40	2.01	0.83	2	TSS impacted by maturation pond algae
20/05/2014	27/05/2014	140872		2	64	31	10.40	<0.1	13.10	1.74	0.87	10	TSS impacted by maturation pond algae
03/06/2014	11/06/2014	140944		18	48	5	9.70	0.60	14.40	2.14	0.83	72	TSS impacted by maturation pond algae
17/06/2014	30/06/2014	141027		17	37	5	9.60	0.20	15.80	3.96	0.82	28	TSS impacted by maturation pond algae
01/07/2014	09/07/2014	141107		16	32	5	9.70	0.45	17.50	2.62	0.85	90	TSS impacted by maturation pond algae
15/07/2014	31/07/2014	141203		22	72	5	10.50	<0.1	24.60	3.12	0.93	2	TSS impacted by maturation pond algae
29/07/2014	06/08/2014	141286		16	45	5	10.70	<0.1	16.10	2.19	0.90	<2	TSS impacted by maturation pond algae
12/08/2014	22/08/2014	141363		34	84	5	10.40	<0.1	19.30	3.03	0.92	<2	TSS impacted by maturation pond algae
26/08/2014	04/09/2014	141446		39	85	5	10.80	<0.1	15.60	2.51	0.90	<2	TSS impacted by maturation pond algae
09/09/2014	17/09/2014	141526		39	134	5	10.80	<0.1	19.50	2.72	0.92	3	TSS impacted by maturation pond algae
23/09/2014	01/10/2014	141622		42	120	5	11.00	<0.1	19.80	1.67	1.02	<2	TSS impacted by maturation pond algae
07/10/2014	21/10/2014	141688		19	38	5	8.90	3.70	13.10	2.88	0.99	130	TSS impacted by maturation pond algae
21/10/2014	21/10/2014	141786		9	39	5	9.80	0.40	7.90	2.05	0.99	<2	TSS impacted by maturation pond algae
05/11/2014	17/11/2014	141888		20	51	<5	10.60	0.80	9.00	1.13	1.06	4	TSS impacted by maturation pond algae
18/11/2014	27/11/2014	141964		29	148	14	10.90	1.10	11.30	1.75	1.16	<2	TSS impacted by maturation pond algae
02/12/2014	10/12/2014	142043		16	65	<5	11.00	0.10	11.60	1.01	1.23	<2	TSS impacted by maturation pond algae
16/12/2014	05/01/2015	142157		22	97	<5	10.90	0.40	12.10	1.36	0.93	19,000	TSS impacted by maturation pond algae

Date Sampled	Date Results Report Obtained	Laboratory Report No.	Date uploaded to website	Biological Oxygen Demand ₅ mg/L	Total Suspended Solids mg/L	Oil & Grease mg/L	pH pH Value	Ammonia as Nitrogen mg/L	Total Nitrogen mg/L	Total Phosphorus mg/L	Conductivity uS/cm	Faecal Coliforms cfu/100mL	Comments
03/02/2015	12/02/2015	15226		16	93	<5	10.70	0.30	10.10	1.76	0.94	<5	TSS impacted by maturation pond algae
17/02/2015	26/02/2015	150322		17	57	5	10.50	0.70	18.00	6.59	1.03	5	TSS impacted by maturation pond algae
03/03/2015	12/03/2015	150425		13	52	10	10.70	0.30	7.00	1.29	1.02	<2	TSS impacted by maturation pond algae
17/03/2015	27/03/2015	150517		18	99	6	10.90	0.50	12.00	1.72	1.08	12	TSS impacted by maturation pond algae
31/03/2015	09/04/2015	150599		13	59	<5	10.20	0.70	7.60	1.23	1.08	450	TSS impacted by maturation pond algae
14/04/2015	23/04/2015	150675		12	72	<5	10.40	0.20	8.80	1.33	0.99	14	TSS impacted by maturation pond algae
28/04/2015	07/05/2015	150762		9	41	<5	10.10	0.10	7.10	1.47	0.95	74	TSS impacted by maturation pond algae
12/05/2015	22/05/2015	150842		14	48	<5	10.50	<0.1	9.70	1.57	1.02	<2	TSS impacted by maturation pond algae
26/05/2015	04/06/2015	150928		15	65	9	10.90	<0.1	11.60	2.26	0.97	<2	TSS impacted by maturation pond algae
09/06/2015	19/06/2015	151007		17	94	<5	10.70	<0.1	16.10	3.01	0.94	<2	TSS impacted by maturation pond algae
23/06/2015	02/07/2015	151129		19	96	12	10.90	<0.1	15.60	2.71	0.90	<2	TSS impacted by maturation pond algae
07/07/2015	16/07/2015	151204		15	89	14	10.80	<0.1	16.30	2.90	0.99	<2	TSS impacted by maturation pond algae
21/07/2015	28/07/2015	151301		25	101	7	10.70	<0.1	17.60	2.75	1.00	2	TSS impacted by maturation pond algae
04/08/2015	12/08/2015	151385		26	133	6	10.80	3.60	42.60	7.89	0.99	<2	TSS impacted by maturation pond algae
18/08/2015	26/08/2015	151486		33	150	19	11.00	<0.1	20.20	2.89	1.08	<2	TSS impacted by maturation pond algae
01/09/2015	10/09/2015	151552		22	122	5	11.00	<0.1	18.60	2.60	1.07	<2	TSS impacted by maturation pond algae
15/09/2015	23/09/2015	151654		26	100	<5	10.90	<0.1	14.80	1.90	1.09	<2	TSS impacted by maturation pond algae
29/09/2015	09/10/2015	151748		17	67	<5	9.80	0.10	12.40	4.14	1.17	28	TSS impacted by maturation pond algae
13/10/2015	22/10/2015	151843		19	79	<5	10.00	0.70	8.80	2.33	1.18	28	TSS impacted by maturation pond algae
27/10/2015	04/11/2015	151932		23	120	<5	11.00	0.50	11.60	1.88	1.10	<2	TSS impacted by maturation pond algae
10/11/2015	19/11/2015	152020		15	83	5	10.60	0.30	9.20	1.24	1.11	2	TSS impacted by maturation pond algae
24/11/2015	03/12/2015	152110		28	180	5	10.90	0.80	15.70	2.02	1.28	2	TSS impacted by maturation pond algae
08/12/2015	23/12/2015	152225		31	105	5	11.20	1.00	18.30	1.31	1.39	N/A	TSS impacted by maturation pond algae
15/12/2015	04/01/2016	152306		22	113	5	10.50	1.00	9.90	1.33	1.35	2	TSS impacted by maturation pond algae

Date Sampled	Date Results Report Obtained	Laboratory Report No.	Date uploaded to website	Biological Oxygen Demand ₅ mg/L	Total Suspended Solids mg/L	Oil & Grease mg/L	pH pH Value	Ammonia as Nitrogen mg/L	Total Nitrogen mg/L	Total Phosphorus mg/L	Conductivity uS/cm	Faecal Coliforms cfu/100mL	Comments
02/02/2016	10/02/2016	160246		15	101	5	10.80	0.90	8.80	1.37	0.96	2	TSS impacted by maturation pond algae
16/02/2016	26/02/2016	160336		21	95	5	10.60	0.90	7.20	0.76	1.18	2	TSS impacted by maturation pond algae
01/03/2016	09/03/2016	160437		18	153	5	10.80	0.50	12.50	1.82	1.36	2	TSS impacted by maturation pond algae
15/03/2016	24/03/2016	160557		21	134	5	10.30	0.90	9.40	1.28	1.35	220	TSS impacted by maturation pond algae
29/03/2016	07/04/2016	160640		8	53	5	10.00	1.40	7.90	1.48	1.35	210	TSS impacted by maturation pond algae
12/04/2016	20/04/2016	160774		18	76	5	10.70	0.60	11.40	1.35	1.33	4	TSS impacted by maturation pond algae
26/04/2016	06/05/2016	160860		12	93	5	10.30	0.80	12.80	1.76	1.31	130	TSS impacted by maturation pond algae
10/05/2016	17/05/2016	160973		11	68	5	10.40	0.10	13.00	1.86	1.19	26	TSS impacted by maturation pond algae
24/05/2016	01/06/2016	161064		9	44	5	10.10	0.36	17.00	1.98	1.23	93	TSS impacted by maturation pond algae
07/06/2016	21/06/2016	161175		16	86	5	10.80	0.05	17.00	1.70	0.97	2	TSS impacted by maturation pond algae
21/06/2016	05/07/2016	161269		12	71	5	9.90	0.43	16.80	2.60	0.88	N/A	TSS impacted by maturation pond algae
28/06/2016	06/07/2016	161317										3	Coliform resampled as previous sample outside holding time
05/07/2016	15/07/2016	161376		21	92	5	10.30	0.10	18.20	3.05	0.90	4	TSS impacted by maturation pond algae
19/07/2016	27/07/2016	161488		37	135	5	10.50	0.10	23.60	3.66	1.02	2	TSS impacted by maturation pond algae
02/08/2016	11/08/2016	161577		36	102	5	10.50	0.10	21.90	4.50	0.96	2	TSS impacted by maturation pond algae
09/08/2016	17/08/2016	161634										2	Coliform resampled as previous sample outside holding time
16/08/2016	23/08/2016	161685		26	103	5	10.60	0.10	22.60	3.02	0.90	2	TSS impacted by maturation pond algae
30/08/2016	09/09/2016	161783		24	100	5	10.80	0.10	20.10	3.06	0.85	2	TSS impacted by maturation pond algae
13/09/2016	21/09/2016	161894		5	13	5	9.50	1.00	13.00	2.01	0.76	370	
27/09/2016	06/10/2016	162014		23	93	5	10.90	0.10	11.70	2.13	0.66	2	TSS impacted by maturation pond algae
11/10/2016	18/10/2016	162127		18	39	5	9.60	0.20	8.20	3.16	0.71	1500	TSS impacted by maturation pond algae
25/10/2016	02/11/2016	162235		20	79	5	10.70	0.10	6.10	2.18	0.64	2	TSS impacted by maturation pond algae

Date Sampled	Date Results Report Obtained	Laboratory Report No.	Date uploaded to website	Biological Oxygen Demand ₅ mg/L	Total Suspended Solids mg/L	Oil & Grease mg/L	pH pH Value	Ammonia as Nitrogen mg/L	Total Nitrogen mg/L	Total Phosphorus mg/L	Conductivity uS/cm	Faecal Coliforms cfu/100mL	Comments
08/11/2016	16/11/2016	162341		13	39	5	9.20	1.50	6.50	4.45	0.75	810	TSS impacted by maturation pond algae
22/11/2016	30/11/2016	162449		17	37	5	9.70	0.60	6.60	2.86	0.78	62	TSS impacted by maturation pond algae
06/12/2016	15/12/2016	162564		28	104	5	10.70	0.10	9.60	2.15	0.86	2	TSS impacted by maturation pond algae
13/12/2016	22/12/2016	162635		28	101	5	9.40	2.70	15.80	3.05	0.86	78	TSS impacted by maturation pond algae
31/01/2017	09/02/2017	170225		19	93	5	10.60	0.10	4.80	0.60	0.87	N/A	TSS impacted by maturation pond algae
07/02/2017	15/02/2017	170274										350	Coliform resampled as previous sample outside holding time
14/02/2017	23/02/2017	170300		19	89	5	10.60	9.70	9.70	1.13	0.85	4	TSS impacted by maturation pond algae
28/02/2017	08/03/2017	170433		14	106	5	11.00	0.50	10.20	0.90	0.97	2	TSS impacted by maturation pond algae
14/03/2017	28/03/2017	170542		11	57	5	10.50	0.52	12.80	1.40	0.83	310	TSS impacted by maturation pond algae
28/03/2017	05/04/2017	170647		7	33	5	10.20	0.30	6.40	1.04	0.69	70	TSS impacted by maturation pond algae
11/04/2017	21/04/2017	170773		13	86	5	10.80	0.10	19.90	2.73	0.78	2	TSS impacted by maturation pond algae
26/04/2017	05/05/2017	170893		8	27	5	9.70	1.30	7.80	1.47	0.79	930	
09/05/2017	19/05/2017	170981		10	30	5	9.40	1.30	11.00	1.50	0.87	300	TSS impacted by maturation pond algae
23/05/2017	31/05/2017	171083		4	7	5	8.90	3.10	8.70	2.60	0.81	1900	
06/06/2017	15/06/2017	171187		21	64	5	9.30	2.24	16.30	3.14	0.87	160	TSS impacted by maturation pond algae
20/06/2017	28/06/2017	171306		23	125	5	10.30	0.10	15.00	3.24	0.80	34	TSS impacted by maturation pond algae
04/07/2017	12/07/2017	171431		21	112	5	10.80	0.10	18.00	3.21	0.74	68	TSS impacted by maturation pond algae
18/07/2017	27/07/2017	171553		16	83	5	10.70	0.10	15.00	2.12	0.78	4	TSS impacted by maturation pond algae
01/08/2017	09/08/2017	171652		34	127	5	10.70	0.10	20.40	3.14	0.77	14	TSS impacted by maturation pond algae
15/08/2017	28/08/2017	171754		33	128	5	10.80	0.10	15.60	2.31	0.79	2	TSS impacted by maturation pond algae
29/08/2017	06/09/2017	171844		31	179	5	11.00	0.20	22.80	3.66	0.82	2	TSS impacted by maturation pond algae
12/09/2017	25/09/2017	171957		28	109	5	11.20	0.00	18.60	2.39	0.93	2	TSS impacted by maturation pond algae
26/09/2017	06/10/2017	172072		20	118	5	11.20	0.10	17.50	2.29	0.94	2	TSS impacted by maturation pond algae
10/10/2017	18/10/2017	172187		4	8	5	8.50	0.10	4.10	2.34	1.38	330	
24/10/2017	24/10/2017	172303		7	13	5	9.00	6.20	10.10	3.29	0.86	250	

Date Sampled	Date Results Report Obtained	Laboratory Report No.	Date uploaded to website	Biological Oxygen Demand ₅ mg/L	Total Suspended Solids mg/L	Oil & Grease mg/L	pH pH Value	Ammonia as Nitrogen mg/L	Total Nitrogen mg/L	Total Phosphorus mg/L	Conductivity uS/cm	Faecal Coliforms cfu/100mL	Comments
08/11/2017	20/11/2017	172413		30	59	5	10.70	0.80	17.70	1.37	0.82	6	TSS and BOD impacted by maturation pond algae
21/11/2017	30/11/2017	172495		21	100	5	11.00	0.70	11.40	5.41	0.91	2	TSS and BOD impacted by maturation pond algae
04/12/2017	15/12/2017	172599		15	76	5	10.90	1.70	11.00	1.73	0.87	10	TSS impacted by maturation pond algae
18/12/2017	04/01/2018	172742		18	46	5	10.20	2.06	6.40	0.36	0.92	40	TSS impacted by maturation pond algae
30/01/2018	07/02/2018	180233		13	38	5	9.70	2.40	7.50	1.97	1.04	2100	TSS impacted by maturation pond algae
13/02/2018	27/02/2018	180328		26	61	5	9.70	1.68	8.80	2.13	1.09	2000	TSS and BOD impacted by maturation pond algae
26/02/2018	06/03/2018	180418		13	114	5	10.20	1.00	12.70	1.58	0.92	5700	TSS impacted by maturation pond algae
13/03/2018	21/03/2018	180537		15	85	5	10.40	0.90	11.00	1.41	0.89	340	TSS impacted by maturation pond algae
27/03/2018	09/04/2018	180638		10	66	5	10.20	0.87	10.20	1.15	0.91	54	TSS impacted by maturation pond algae
10/04/2018	24/04/2018	180729		19	100	5	10.80	1.00	7.50	1.81	0.93	2	TSS impacted by maturation pond algae
23/04/2018	02/05/2018	180817		8	180	5	10.70	0.55	18.60	2.55	0.95	2	TSS impacted by maturation pond algae
08/05/2018	16/05/2018	180915		31	57	5	9.80	1.50	18.50	1.86	0.97	64	TSS and BOD impacted by maturation pond algae
22/05/2018	31/05/2018	181015	21/06/2018	9	27	5	8.80	3.00	26.00	2.97	1.06	40	
05/06/2018	20/06/2018	181116	12/07/2018	11	27	5	9.40	2.0	24.30	2.70	1.03	24	
19/06/2018	27/06/2018	181209	12/07/2018	40	137	5	10.30	0.1	32.10	3.43	0.96	20	TSS and BOD impacted by maturation pond algae
03/07/2018	11/07/2018	181304	12/07/2018	28	98	5	10.90	0.1	28.50	2.69	0.96	4	TSS and BOD impacted by maturation pond algae
17/07/2018	26/07/2018	181396	30/07/2018	27	70	5	10.40	0.8	27.30	2.78	0.95	14	TSS and BOD impacted by maturation pond algae
31/07/2018	09/08/2018	181480	09/08/2018	39	118	5	10.90	0.1	29.40	2.67	1.01	2	TSS and BOD impacted by maturation pond algae
14/08/2018	22/08/2018	181571	23/08/2018	42	164	5	10.60	0.10	31.70	3.15	0.93	40	TSS and BOD impacted by maturation pond algae
28/08/2018	10/09/2018	181667	12/09/2018	33	135	5	10.90	0.30	25.70	2.61	0.94	2	TSS and BOD impacted by maturation pond algae
11/09/2018	19/09/2018	181759	24/09/2018	32	102	5	11.00	0.21	20.20	1.86	0.99	2	TSS and BOD impacted by maturation pond algae
25/09/2018	03/10/2018	192560	03/10/2018	9	11	5	9.10	5.30	18.30	2.75	1.09	34	
23/10/2018	31/10/2018	193868	01/11/2018	6	10	5	8.50	9.34	12.00	5.75	1.12	370	

Date Sampled	Date Results Report Obtained	Laboratory Report No.	Date uploaded to website	Biological Oxygen Demand ₅ mg/L	Total Suspended Solids mg/L	Oil & Grease mg/L	pH pH Value	Ammonia as Nitrogen mg/L	Total Nitrogen mg/L	Total Phosphorus mg/L	Conductivity uS/cm	Faecal Coliforms cfu/100mL	Comments
20/11/2018	29/11/2018	195385	30/11/2018	21	66	5	9.90	2.2	10.50	1.76	0.97	2	TSS and BOD impacted by maturation pond algae
18/12/2018	28/12/2018	196741	03/01/2019	12	80	5	10.00	1.48	9.41	1.45	0.98	9	TSS impacted by maturation pond algae
15/01/2019	24/01/2019	197906	24/01/2019	11	140	5	10.60	0.36	11.10	1.72	1.15	1	TSS impacted by maturation pond algae
12/02/2019	21/02/2019	199303	22/02/2019	19	140	5	10.40	0.81	14.10	2.18	1.26	300	
12/03/2019	22/03/2019	200932	22/03/2019	9	82	5	10.50	9.35	11.10	1.52	1.25	1	TSS impacted by maturation pond algae
09/04/2019	26/04/2019	202681	26/04/2019	9	60	5	10.0	1.19	10.20	1.62	1.03	2	TSS impacted by maturation pond algae
07/05/2019	21/05/2019	203886	23/05/2019	4	16	5	9.30	1.94	11.30	2.79	1.01	120	
04/06/2019	17/06/2019	205324	20/06/2019	4	5	5	8.4	6.98	16.60	4.36	1.10	11000	
02/07/2019	11/07/2019	206582	12/07/2019	6	9	5	8.4	8.66	17.30	4.70	1.17	810	
30/07/2019	07/08/2019	207973	08/08/2019	40	80	5	9.6	0.42	18.90	4.82	1.07	4	TSS and BOD impacted by maturation pond algae
27/08/2019	06/09/2019	209430	12/09/2019	12	19	8	8.8	3.90	14.20	4.96	1.15	81	
24/09/2019	03/10/2019	210776	04/10/2019	22	74	5	10.8	1.19	14.90	2.53	1.10	1	TSS and BOD impacted by maturation pond algae
22/10/2019	01/11/2019	ES1934783	06/11/2019	11	60	5	9.9	0.32	9.50	2.08	1.24	2	TSS and BOD impacted by maturation pond algae
Date Sampled	Date Results Report Obtained	Laboratory Report No.	Date uploaded to website	Biological Oxygen Demand ₅ mg/L	Total Suspended Solids mg/L	Oil & Grease mg/L	pH pH Value	Ammonia as Nitrogen mg/L	Total Nitrogen mg/L	Total Phosphorus mg/L	Conductivity uS/cm	Faecal Coliforms cfu/100mL	Comments
19/11/2019	28/11/2019	ES1938322	06/12/2019	16	137	5	10.2	2.17	13.10	1.95	1.30	2	TSS impacted by maturation pond algae
17/12/2019	27/12/2019	ES1942020	13/01/2020	24	310	5	10.0	1.35	22.40	3.20	1.34	2	TSS and BOD impacted by maturation pond algae
14/01/2020	23/01/2020	ES2001073	24/01/2020	15	155	5	9.9	1.64	20.10	2.22	1.54	1200	TSS impacted by maturation pond algae
11/02/2020	20/02/2020	ES2004744	26/02/2020	8	33	5	9.1	1.59	24.30	1.41	0.71	42	TSS impacted by maturation pond algae
10/03/2020	18/03/2020	ES2008357	20/03/2020	8	99	5	9.9	0.93	11.40	1.61	0.82	2	TSS impacted by maturation pond algae
07/04/2020	17/04/2020	ES2012059	23/04/2020	10	100	5	9.6	0.28	12.20	1.86	0.71	8	TSS impacted by maturation pond algae
05/05/2020	05/05/2020	ES2015355	14/05/2020	9	42	5	8.8	2.62	13.70	2.49	0.85	1000	
02/06/2020	11/06/2020	ES2019150	12/06/2020	16	67	5	8.8	2.8	15.00	3.87	0.90	12000	TSS impacted by maturation pond algae
30/06/2020	07/07/2020	ES2022673	13/07/2020	8	26	5	8.8	2.2	12.00	4.24	0.89	60	
28/07/2020	07/08/2020	ES2026276	11/08/2020	16	35	6	8.6	3.0	18.00	3.48	0.77	4600	TSS impacted by maturation pond algae
25/08/2020	02/09/2020	ES2029955	09/09/2020	19	110	5	9.9	0.1	18.00	4.01	0.86	2	TSS impacted by maturation pond algae
22/09/2020	30/09/2020	ES2033505	02/10/2020	15	23	5	8.8	2.3	9.30	3.26	0.85	150	
20/10/2020	28/10/2020	ES2036902	30/10/2020	17	103	5	10.1	0.1	3.40	2.30	0.78	2	TSS impacted by maturation pond algae
Date Sampled	Date Results Report Obtained	Laboratory Report No.	Date uploaded to website	Biological Oxygen Demand ₅ mg/L	Total Suspended Solids mg/L	Oil & Grease mg/L	pH pH Value	Ammonia as Nitrogen mg/L	Total Nitrogen mg/L	Total Phosphorus mg/L	Conductivity uS/cm	Faecal Coliforms cfu/100mL	Comments
17/11/2020	26/11/2020	ES2040988	27/11/2020	19	58	5	9.1	0.2	7.10	1.89	0.91	9	TSS impacted by maturation pond algae
15/12/2020	30/12/2020	ES2044724	11/01/2021	23	115	5	9.8	1.4	18.90	2.27	0.89	12	TSS impacted by maturation pond algae
06/01/2021	13/01/2021	ES2100523	15/01/2021	28	62	5	9.3	2.6	34.20	4.83	0.60	120	TSS impacted by maturation pond algae
02/02/2021	09/02/2021	ES2103500	11/02/2021	5	136	5	9.7	1.3	13.60	1.59	0.84	270	TSS impacted by maturation pond algae
02/03/2021	09/03/2021	ES2107469	12/03/2021	2	228	5	9.9	1.0	17.60	2.36	0.81	2	TSS impacted by maturation pond algae
30/03/2021	09/04/2021	ES2111746	16/04/2021	7	143	5	9.4	0.4	13.50	1.59	0.58	2	TSS impacted by maturation pond algae
27/04/2021	06/05/2021	ES2115719	10/05/2021	6	34	5	8.5	5.08	10.80	1.69	0.80	180	TSS impacted by maturation pond algae
25/05/2021	02/06/2021	ES2119667	04/06/2021	44	46	5	8.8	1.37	15.20	3.08	0.74	38	TSS impacted by maturation pond algae
22/06/2021	01/07/2021	ES2123278	02/07/2021	7	32	5	8.8	3.27	11.30	3.74	0.62	150	
20/07/2021	11/08/2021	ES2126708	16/08/2021	29	124	5	9.6	0.05	19.80	3.14	0.57	2	TSS & BOD impacted by maturation pond algae
17/08/2021	31/08/2021	ES2130552	01/09/2021	25	145	5	9.6	0.1	14.10	14.90	0.76	2	TSS & BOD impacted by maturation pond algae
14/09/2021	23/09/2021	ES2133531	27/09/2021	51	41	5	8.9	3.26	23.80	3.88	0.79	520	TSS & BOD impacted by maturation pond algae
12/10/2021	20/10/2021	ES2136831	22/10/2021	45	9	5	8.3	6.82	11.70	4.41	0.75	160	BOD impacted by maturation pond algae

Date Sampled	Date Results Report Obtained	Laboratory Report No.	Date uploaded to website	Biological Oxygen Demand ₅ mg/L	Total Suspended Solids mg/L	Oil & Grease mg/L	pH pH Value	Ammonia as Nitrogen mg/L	Total Nitrogen mg/L	Total Phosphorus mg/L	Conductivity uS/cm	Faecal Coliforms cfu/100mL	Comments
09/11/2021	17/11/2021	ES2140564	22/11/2021	7	28	<5	8.8	2.38	7.90	2.76	0.73	~3000	
07/12/2021	15/12/2021	ES2144729	17/12/2021	10	16	6	8.5	0.7	3.40	1.93	0.59	4200	
04/01/2022	14/01/2022	ES2200146	14/01/2021	11	62	<5	8.4	4.09	9.70	2.63	0.81	610	TSS impacted by maturation pond algae
01/02/2022	09/02/2022	ES2203426	10/02/2022	10	38	<5	9.0	0.52	6.30	1.24	0.75	2800	TSS impacted by maturation pond algae
01/03/2022	09/03/2022	ES2207183	16/03/2022	22	73	<5	8.6	2.2	14.30	3.54	0.68	~1000	TSS & BOD impacted by maturation pond algae
29/03/2022	07/04/2022	ES2211108	12/04/2022	19	92	<5	9.7	0.06	15.60	2.04	0.59	120	TSS impacted by maturation pond algae
27/04/2022	05/05/2022	ES2214497	06/05/2022	22	35	<5	8.5	1.12	12.60	2.44	0.80	610	TSS & BOD impacted by maturation pond algae
27/04/2022	05/05/2022	ES2214497	06/05/2022	22	35	<5	8.5	1.12	12.60	2.44	0.80	610	TSS & BOD impacted by maturation pond algae
24/05/2022	01/06/2022	ES2218151	03/06/2022	14	61	<5	8.6	2.21	13.00	3.13	0.77	650	TSS impacted by maturation pond algae
21/06/2022	29/06/2022	ES2221856	04/07/2022	35	61	9	9.0	1.05	22.80	3.31	0.74	~2	TSS & BOD impacted by maturation pond algae
19/07/2022	27/07/2022	ES2225572	29/07/2022	34	74	<5	9.9	0.38	20.60	2.54	0.69	<1	TSS & BOD impacted by maturation pond algae
16/08/2022	24/08/2022	ES2229338	26/08/2022	10	110	<5	9.9	0.09	15.40	3.26	0.50	~<2	TSS impacted by maturation pond algae
13/09/2022	21/09/2022	ES2232936	26/09/2022	21	104	9	10.2	0.13	44.40	6.30	0.62	<2	TSS impacted by maturation pond algae
11/10/2022	19/10/2022	ES2236519	21/10/2022	7	27	<5	8.6	3.89	12.60	2.53	0.58	2500	
08/11/2022	16/11/2022	ES2240463	18/11/2022	16	106	<5	9.8	0.1	12.00	2.35	0.46	~30	TSS impacted by maturation pond algae

* Prior to the requirement to publish monitoring data, Council had different processes and this date is not obtainable.

Units of measure Key

unit full wording

mg/L milligram per litre

pH pH

u S/cm micro Siemens per centimetre

cfu/100mL coliforms detected per 100 millimetres

Secondary Effluent Werris Creek Sewer Treatment Plant - Monitoring Point 3

Anniversary Date: 31st October

Date Sampled	Date Results Report Obtained	Laboratory Report No.	Biological Oxygen Demand ₅ mg/L	Total Suspended Solids mg/L	Oil & Grease mg/L	pH pH Value	Ammonia as Nitrogen mg/L	Total Nitrogen mg/L	Total Phosphorus mg/L	Conductivity uS/cm	Faecal Coliforms cfu/100mL	Comments
12/11/2013	21/11/2013	131837	17	74	<5	10	0.5	15.3	2.17	0.83	52	
26/11/2013	06/12/2013	131915	19	42	<5	9	3.2	13.6	2.49	0.79	3300	
10/12/2013	23/12/2013	132019	17	16	<5	8	0.9	36.3	7.27	0.91	40000	
17/12/2013	02/01/2014	132061	9	6	<5	8	2.2	39.9	7.60	0.95	150000	
02/01/2014	09/01/2014	140003	17	14	<5	8	1.9	42.7	8.36	0.97	270000	
14/01/2014	22/01/2014	140080	18	80	<5	11	<0.03	2.8	0.66	0.96	34	
28/01/2014	04/02/2014	140157	9	4	<5	8	2.1	39.2	7.27	0.98	72000	
11/02/2014	21/02/2014	140254	8	6	<5	8	1.3	36.4	7.21	1.01	90000	
25/02/2014	07/03/2014	140330	9	5	<5	8	1.9	38.1	7.06	0.97	250000	
11/03/2014	20/03/2014	14043	8	8	<5	8	2.1	35.2	7.18	0.98	80000	
25/03/2014	02/04/2014	140524	7	3	<5	8	2.5	33.6	6.50	0.78	290000	
08/04/2014	17/04/2014	140619	8	6	<5	8	2.4	35.8	7.34	0.94	370000	
02/04/2014	05/05/2014	140696	9	4	<5	8	3.3	40.2	7.47	0.98	370000	
06/05/2014	06/05/2014	140785	17	9	<5	8	4.7	40.3	6.99	0.97	560000	
20/05/2014	27/05/2014	140872	11	6	<5	8	3.3	41.1	7.77	1.01	240000	
03/06/2014	11/06/2014	140944	10	7	<5	8	2.6	42.0	7.29	0.95	150000	
17/06/2014	30/06/2014	141027	11	6	<5	8	3.2	38.8	6.91	0.99	82000	
01/07/2014	09/07/2014	141107	17	11	<5	8	5.6	49.6	6.71	1.00	530000	
15/07/2014	31/07/2014	141203	19	18	<5	8	6.0	46.8	8.25	1.03	230000	
29/07/2014	06/08/2014	141286	14	12	<5	8	2.7	41.4	7.76	1.02	500000	
12/08/2014	22/08/2014	141363	15	11	<5	8	4	47.3	8.12	1.05	500000	
26/08/2014	04/09/2014	141446	12	11	<5	8	2.6	44.3	8.19	1.03	300000	
09/09/2014	17/09/2014	141526	11	9	<5	8	2.7	43.0	8.03	1.01	470000	
23/09/2014	01/10/2014	141622	11	9	<5	8	2.8	43.5	7.58	1.04	27000	
07/10/2014	21/10/2014	141688	17	16	<5	8	2.9	46.3	9.29	1.06	150000	
21/10/2014	21/10/2014	141786	18	20	<5	8	2.5	42.3	8.17	1.02	64000	
05/11/2014	17/11/2014	141888	13	16	<5	8	3.8	36.2	7.64	1.02	75000	
18/11/2014	27/11/2014	141964	14	24	11	8	4.3	40.4	8.07	1.10	760000	
02/12/2014	10/12/2014	142043	8	6	<5	8	2.1	36.6	7.21	1.02	12000	
16/12/2014	05/01/2015	142157	12	10	<5	7.6	2.2	36.9	7.01	1.04	<2	

Date Sampled	Date Results Report Obtained	Laboratory Report No.	Biological Oxygen Demand ₅ mg/L	Total Suspended Solids mg/L	Oil & Grease mg/L	pH pH Value	Ammonia as Nitrogen mg/L	Total Nitrogen mg/L	Total Phosphorus mg/L	Conductivity uS/cm	Faecal Coliforms cfu/100mL	Comments
03/02/2015	12/02/2015	150226	6	3	6	8	3.2	43.3	8.34	0.97	28 000	
17/02/2015	26/02/2015	150322	13	13	<5	8	<0.1	3.90	0.58	1.05	9600	
03/03/2015	12/03/2015	150425	7	4	10	8	2.7	39.70	8.29	1.03	20000	
17/03/2015	27/03/2015	150517	8	4	6	8	3.0	44.10	8.36	1.14	140000	
31/03/2015	09/04/2015	150599	7	3	14	8	3.6	42.10	7.53	1.09	100000	
14/04/2015	23/04/2015	150675	9	7	6	8	4.3	40.70	8.52	1.13	51000	
28/04/2015	07/05/2015	150762	10	5	<5	8	4.1	40.50	6.83	1.13	32000	
12/05/2015	22/05/2015	150842	11	6	<5	7.5	3.9	36.80	6.95	1.12	250000	
26/05/2015	04/06/2015	150928	11	8	8	7.5	4.1	39.80	8.48	1.12	300000	
09/06/2015	19/06/2015	151007	18	19	<5	7.5	7.3	41.10	7.87	1.12	550000	
23/06/2015	02/07/2015	151129	19	11	10	7.6	8.1	43.30	7.68	1.09	160000	
07/07/2015	16/07/2015	151204	14	9	12	7.5	4.7	39.90	7.50	1.11	110000	
21/07/2015	28/07/2015	151301	16	11	7	7.5	4.9	41.30	7.53	1.14	210000	
04/08/2015	12/08/2015	151385	15	9	8	7.5	<0.1	19.30	4.28	1.12	120000	
18/08/2015	26/08/2015	151486	19	16	37	7.4	4.6	43.00	8.55	1.14	27000	
01/09/2015	10/09/2015	151552	15	9	8	7.5	3.5	48.00	8.28	1.17	69000	
15/09/2015	23/09/2015	151654	17	11	<5	7.4	3.5	46.30	8.94	1.21	280000	
29/09/2015	09/10/2015	151748	14	9	<5	7.5	3.9	42.10	8.14	1.20	400000	
13/10/2015	22/10/2015	151843	9	6	<5	7.6	2.9	43.00	8.04	1.24	54000	
27/10/2015	04/11/2015	151932	8	5	<5	7.5	2.2	33.10	7.45	1.01	54000	
10/11/2015	19/11/2015	152020	8	5	5	7.6	2.7	39.90	8.24	1.22	54000	
24/11/2015	03/12/2015	152110	8	4	9	7.7	2.6	41.70	8.18	1.23	55000	
08/12/2015	23/12/2015	152225	25	31	<5	7.3	3.5	43.60	8.15	1.23	N/A	
15/12/2015	04/01/2016	152306	9	5	<5	7.7	2.3	36.70	7.81	1.23	43000	

Date Sampled	Date Results Report Obtained	Laboratory Report No.	Biological Oxygen Demand ₅ mg/L	Total Suspended Solids mg/L	Oil & Grease mg/L	pH pH Value	Ammonia as Nitrogen mg/L	Total Nitrogen mg/L	Total Phosphorus mg/L	Conductivity uS/cm	Faecal Coliforms cfu/100mL	Comments
02/02/2016	10/02/2016	160246	6	3	<5	7.6	1.7	34.70	7.09	1.22	40000	
16/02/2016	26/02/2016	160336	6	2	<5	7.5	2.0	37.50	7.58	1.26	48000	
01/03/2016	09/03/2016	160437	6	3	<5	7.5	2.6	36.70	7.90	1.34	40000	
15/03/2016	24/03/2016	160557	6	2	<5	7.6	1.8	35.60	7.87	1.22	67000	
29/03/2016	07/04/2016	160640	10	10	<5	7.7	2.7	34.90	8.20	1.24	270000	
12/04/2016	20/04/2016	160774	6	3	<5	7.6	2.3	39.30	7.92	1.26	170000	
26/04/2016	06/05/2016	160860	8	5	<5	7.7	4.0	39.60	7.65	1.27	96000	
10/05/2016	17/05/2016	160973	7	4	<5	7.5	2.7	40.50	8.19	1.23	53000	
24/05/2016	01/06/2016	161064	8	4	<5	7.7	2.4	35.00	6.32	1.22	81000	
07/06/2016	21/06/2016	161175	13	9	<5	7.5	3.2	32.30	5.57	1.19	82000	
21/06/2016	05/07/2016	161269	8	6	<5	7.6	0.9	27.40	2.79	0.83	130000	
05/07/2016	15/07/2016	161376	22	25	<5	7.7	10.6	38.30	7.93	1.11	98000	
19/07/2016	27/07/2016	161488	12	9	<5	7.4	4.6	29.60	8.25	1.11	170000	
02/08/2016	11/08/2016	161577	3	8	<5	7.4	4.1	41.40	9.66	1.08	19000	
16/08/2016	23/08/2016	161685	13	10	<5	7.3	3.1	39.40	7.82	1.01	480000	
30/08/2016	09/09/2016	161783	18	10	<5	7.3	4.2	44.70	8.24	1.00	110000	
13/09/2016	21/09/2016	161894	13	10	<5	7.2	2.9	43.70	7.97	0.97	340000	
27/09/2016	06/10/2016	162014	10	8	<5	7.3	3.2	38.60	7.43	0.92	110000	
11/10/2016	18/10/2016	162127	13	8	<5	7.2	2.2	38.40	8.35	0.89	39000	
25/10/2016	02/11/2016	162235	10	7	<5	7.4	2.2	37.10	6.83	0.83	330000	

Date Sampled	Date Results Report Obtained	Laboratory Report No.	Biological Oxygen Demand ₅ mg/L	Total Suspended Solids mg/L	Oil & Grease mg/L	pH pH Value	Ammonia as Nitrogen mg/L	Total Nitrogen mg/L	Total Phosphorus mg/L	Conductivity uS/cm	Faecal Coliforms cfu/100mL	Comments
08/11/2016	16/11/2016	162341	15	14	5	7.3	2.9	36.20	7.77	0.86	43000	
22/11/2016	30/11/2016	162449	11	10	5	7.3	1.6	40.60	7.87	0.90	41000	
06/12/2016	15/12/2016	162564	11	10	5	7.4	2.0	31.90	7.87	0.85	27000	
13/12/2016	22/12/2016	162635	11	9	5	7.5	4.5	41.10	8.77	0.95	120000	
31/01/2017	09/02/2017	170225	7	5	5	7.4	2.0	37.40	7.69	0.87	N/A	
07/02/2017	15/02/2017	170274									63000	
14/02/2017	23/02/2017	170330	8	5	5	7.5	1.6	33.30	7.31	0.86	300000	
28/02/2017	08/03/2017	170433	13	8	5	7.5	3.8	40.80	5.45	0.89	150000	
14/03/2017	28/03/2017	170542	10	6	5	7.3	3.1	42.70	6.50	0.87	61000	
28/03/2017	05/04/2017	170647	12	9	5	7.4	2.9	37.70	7.08	0.89	950000	
11/04/2017	21/04/2017	170773	10	8	5	7.4	3.8	41.10	6.83	0.91	560000	
26/04/2017	05/05/2017	170893	13	23	5	7.4	3.9	48.30	7.23	0.79	630000	
09/05/2017	19/05/2017	170981	24	17	5	7.5	5.8	40.60	7.08	0.92	230000	
23/05/2017	31/05/2017	171083	16	13	5	7.4	2.9	42.90	7.48	0.92	680000	
06/06/2017	15/06/2017	171187	17	10	5	7.4	5.8	43.30	6.45	0.92	460000	
20/06/2017	28/06/2017	171306	13	12	5	7.1	3.8	41.00	7.38	0.92	450000	
04/07/2017	12/07/2017	171431	18	20	5	7.5	4.8	39.00	6.60	0.89	300000	
18/07/2017	27/07/2017	171553	18	19	5	7.3	4.9	41.00	7.42	0.87	320000	
01/08/2017	09/08/2017	171652	14	11	5	7.3	4.7	41.70	7.13	0.87	440000	
15/08/2017	28/08/2017	171754	27	27	5	7.4	6.2	39.40	7.44	0.88	830000	
29/08/2017	06/09/2017	171844	17	12	5	7.4	4.4	40.60	7.21	0.90	380000	
12/09/2017	25/09/2017	171957	22	16	5	7.5	4.7	44.00	7.68	0.92	340000	
26/09/2017	06/10/2017	172072	17	9	5	7.3	3.9	49.70	8.49	1.00	430000	
10/10/2017	18/10/2017	172187	2	4	5	8.0	0.1	12.40	5.23	1.27	7500	
24/10/2017	24/10/2017	172303	13	10	5	7.3	3.7	43.30	7.54	0.94	530000	

Date Sampled	Date Results Report Obtained	Laboratory Report No.	Biological Oxygen Demand ₅ mg/L	Total Suspended Solids mg/L	Oil & Grease mg/L	pH pH Value	Ammonia as Nitrogen mg/L	Total Nitrogen mg/L	Total Phosphorus mg/L	Conductivity uS/cm	Faecal Coliforms cfu/100mL	Comments
08/11/2017	20/11/2017	172413	17	14	5	7.4	3.6	56.50	7.18	0.93	640000	
21/11/2017	30/11/2017	172495	9	13	9	7.4	3.6	39.70	7.14	0.96	630000	
04/12/2017	15/12/2017	172599	12	12	5	7.4	3.5	37.50	6.76	0.97	480000	
18/12/2017	04/01/2018	172742	16	15	5	7.4	3.4	37.30	6.12	0.83	95000	
30/01/2018	07/02/2018	180233	35	21	5	7.7	14.7	37.00	7.21	0.99	4000000	
13/02/2018	27/02/2018	180328	14	16	5	7.5	3.6	44.60	6.22	0.99	16000	
26/02/2018	06/03/2018	180418	9	12	5	7.3	1.9	28.60	5.79	0.68	250000	
13/03/2018	21/03/2018	180537	11	6	5	7.4	3.1	39.20	6.99	0.99	120000	
27/03/2018	09/04/2018	180638	8	6	5	7.4	2.7	38.90	5.49	0.88	190000	
10/04/2018	24/04/2018	180729	15	12	5	7.4	4.9	43.20	8.21	0.94	480000	
23/04/2018	02/05/2018	180817	15	12	5	7.5	6.4	46.00	6.63	0.99	920000	
08/05/2018	16/05/2018	180915	12	7	5	7.5	4.2	38.00	6.51	0.99	68000	
22/05/2018	31/05/2018	181015	14	10	5	7.4	5.9	42.90	7.02	1.02	400000	
05/06/2018	20/06/2018	181116	14	11	5	7.50	5.90	42.00	7.11	1.02	500000	
19/06/2018	27/06/2018	181209	18	14	5	7.50	8.30	47.00	7.17	1.04	510000	
03/07/2018	11/07/2018	181304	18	13	5	7.40	5.30	8.20	7.67	1.00	450000	
17/07/2018	26/07/2018	181396	22	14	6	7.50	7.30	43.10	6.81	1.00	420000	
31/07/2018	09/08/2018	181480	26	40	5	7.40	6.10	47.10	7.72	1.05	220000	
14/08/2018	22/08/2018	181571	21	15	5	7.50	6.90	48.60	7.24	1.04	68000	
28/08/2018	10/09/2018	181667	17	13	6	7.3	4.7	45.30	7.33	1.00	31000	
11/09/2018	19/09/2018	181759	16	10	5	7.3	5.7	42.70	6.24	1.04	450000	
25/09/2018	03/10/2018	192560	16	9	5	7.0	-	46.70	7.34	1.09	70000	
23/10/2018	31/10/2018	193868	14	9	5	7.0	-	45.70	7.25	1.05	25000	

Date Sampled	Date Results Report Obtained	Laboratory Report No.	Biological Oxygen Demand ₅ mg/L	Total Suspended Solids mg/L	Oil & Grease mg/L	pH pH Value	Ammonia as Nitrogen mg/L	Total Nitrogen mg/L	Total Phosphorus mg/L	Conductivity uS/cm	Faecal Coliforms cfu/100mL	Comments
20/11/2018	29/11/2018	195385	13	10	5	7.0	-	42.70	7.16	1.06	~23000	
18/12/2018	28/12/2018	196741	6	9	<5	7.2	-	40.40	6.70	1.03	~140000	
15/01/2019	24/01/2019	197906	7	7	<5	7.0	-	40.30	6.98	1.05	~42000	
12/02/2019	21/02/2019	199303	12	20	<5	7.1	-	41.20	7.54	1.11	~21000	
12/03/2019	22/03/2019	200932	11	14	<5	7.1	9.35	42.00	7.20	1.12	~45000	
09/04/2019	26/04/2019	202681	12	12	<5	7.4	-	39.20	6.52	1.13	~130000	
07/05/2019	21/05/2019	203886	10	8	<5	7.1	-	40.40	6.30	1.18	370000	
04/06/2019	17/06/2019	205324	10	7	10	7.3	-	43.20	6.44	1.03	520000	
02/07/2019	11/07/2019	206582	22	16	<5	7.2	-	46.70	7.30	1.14	~830000	
30/07/2019	07/08/2019	207973	18	15	8	7.2	-	46.00	7.90	1.13	500000	
27/08/2019	06/09/2019	209430	25	24	9	7.2	-	44.40	7.08	1.10	470000	
24/09/2019	03/10/2019	210776	62	13	<5	7.2	-	45.60	6.84	1.13	370000	
22/10/2019	01/11/2019	ES1934783	18	20	10	8.1	6.04	47.70	7.39	1.20	250000	
Date Sampled	Date Results Report Obtained	Laboratory Report No.	Biological Oxygen Demand ₅ mg/L	Total Suspended Solids mg/L	Oil & Grease mg/L	pH pH Value	Ammonia as Nitrogen mg/L	Total Nitrogen mg/L	Total Phosphorus mg/L	Conductivity uS/cm	Faecal Coliforms cfu/100mL	Comments
19/11/2019	28/11/2019	ES1938322	16	14	6	7.9	5.10	49.20	5.59	1.19	1100000	
17/12/2019	27/12/2019	ES1942020	8	14	<5	8.04	3.92	42.90	7.15	1.18	60000	
14/01/2020	23/01/2020	ES2001073	14	<5	<5	8.0	3.88	43.70	8.10	1.27	510000	
11/02/2020	20/02/2020	ES2004744	7	7	6	8.2	1.81	35.30	2.50	0.86	53000	
10/03/2020	18/03/2020	ES2008357	7	8	<5	7.8	4.01	41.00	6.74	1.20	~210000	
07/04/2020	17/04/2020	ES2012059	12	13	<5	7.9	3.93	38.50	4.97	0.95	800000	
05/05/2020	05/05/2020	ES2015355	3	16	8	7.7	0.02	15.00	6.20	0.97	850000	
02/06/2020	11/06/2020	ES2019150	20	19	<5	7.2	6.11	65.00	7.53	1.05	1600000	
30/06/2020	07/07/2020	ES2022673	21	22	6	7.4	5.36	54.30	7.99	1.05	400000	
28/07/2020	07/08/2020	ES2026276	10	34	8	7.6	9.07	30.00	3.63	0.67	340000	
25/08/2020	02/09/2020	ES2029955	12	18	8	8.0	10.80	51.20	6.18	1.09	600000	
22/09/2020	30/09/2020	ES2033505	12	16	9	7.4	5.22	45.90	6.86	0.91	300000	
20/10/2020	28/10/2020	ES2036902	10	14	34	8.3	4.13	50.30	7.02	0.86	1200000	
Date Sampled	Date Results Report Obtained	Laboratory Report No.	Biological Oxygen Demand ₅ mg/L	Total Suspended Solids mg/L	Oil & Grease mg/L	pH pH Value	Ammonia as Nitrogen mg/L	Total Nitrogen mg/L	Total Phosphorus mg/L	Conductivity uS/cm	Faecal Coliforms cfu/100mL	Comments
17/11/2020	26/11/2020	ES2040988	9	16	7	7.6	6.10	52.30	6.63	1.13	190000	
15/12/2020	30/12/2020	ES2044724	12	28	5	7.9	8.77	46.00	1.20	0.98	1000000	
06/01/2021	13/01/2021	ES2100523	9	5	5	7.8	-	34.40	5.22	0.71	180000	
02/02/2021	09/02/2021	ES2103500	9	16	5	7.7	-	37.00	4.86	0.69	650000	
02/03/2021	09/03/2021	ES2107469	2	17	5	7.5	5.23	47.60	6.28	0.95	300000	
30/03/2021	09/04/2021	ES2111746	160	5	5	7.8	3.64	40.00	5.22	0.91	600000	
27/04/2021	06/05/2021	ES2115719	12	13	5	7.6	5.83	42.00	5.39	0.85	700000	
25/05/2021	02/06/2021	ES2119667	16	23	7	7.7	9.32	46.40	5.75	0.91	860000	
22/06/2021	01/07/2021	ES2123278	15	24	5	7.4	6.48	52.10	7.50	0.87	800000	
20/07/2021	11/08/2021	ES2126708	28	36	12	7.7	15.7	43.90	6.27	0.90	2500000	
17/08/2021	31/08/2021	ES2130552	5	32	5	7.6	9.81	29.00	3.26	0.95	10000	
14/09/2021	23/09/2021	ES2133531	13	27	5	7.4	7.59	61.10	9.98	0.86	420000	

Date Sampled	Date Results Report Obtained	Laboratory Report No.	Biological Oxygen Demand ₅ mg/L	Total Suspended Solids mg/L	Oil & Grease mg/L	pH pH Value	Ammonia as Nitrogen mg/L	Total Nitrogen mg/L	Total Phosphorus mg/L	Conductivity uS/cm	Faecal Coliforms cfu/100mL	Comments
12/10/2021	20/10/2021	ES2136831	10	14	5	7.4	5.22	44.10	6.80	0.78	410000	
09/11/2021	17/11/2021	ES2140564	8	16	<5	7.7	3.11	53.70	7.72	0.76	3600	
07/12/2021	15/12/2021	ES2144729	14	26	5	7.6	3.2	32.70	5.80	0.64	1500000	
04/01/2022	14/01/2022	ES2200146	<2	14	<5	7.7	6.23	45.00	6.98	0.89	910000	
01/02/2022	09/02/2022	ES2203426	8	18	<5	8.0	7.55	40.50	8.03	0.88	1300000	
01/03/2022	09/03/2022	ES2207183	6	25	<5	7.4	6.07	45.00	6.01	0.79	1600000	
29/03/2022	07/04/2022	ES2211108	8	36	<5	7.7	3.92	38.90	5.90	0.72	3200000	TSS & BOD impacted by maturation pond algae
27/04/2022	05/05/2022	ES2214497	10	18	<5	7.5	5.62	41.10	5.94	0.84	1800000	
24/05/2022	01/06/2022	ES2218151	13	14	<5	7.6	6.3	48.40	5.93	0.88	850000	
21/06/2022	29/06/2022	ES2221856	5	18	7	8.0	8.51	55.20	7.33	0.91	~800000	
19/07/2022	27/07/2022	ES2225572	23	22	28	7.5	9.51	51.60	5.56	0.90	560000	
16/08/2022	24/08/2022	ES2229338	15	20	<5	7.4	4.85	42.20	4.99	0.77	320000	
13/09/2022	21/09/2022	ES2232936	19	26	12	7.4	7.37	44.40	6.30	0.88	460000	
11/10/2022	19/10/2022	ES2236519	12	16	<5	7.5	4.88	41.60	5.22	0.76	400000	
08/11/2022	16/11/2022	ES2240463	16	28	<5	7.8	9.03	64.10	8.94	0.97	820000	

* Prior to the requirement to publish monitoring data, Council had different processes and this date is not obtainable.

Units of measure Key
unit full wording
mg/L milligram per litre
pH pH
u S/cm micro Siemens per centimetre
cfu/100mL coliforms detected per 100 millimetres

