

CONTAINER MOUNTED SHELTER KIT

Assembly Instructions

Expressway Spares

Price: \$77.00

Additional copies of this Manual may be ordered by quoting the Customer Name, Shelter Code and Purchase Order Number to an Allshelter Sales Representative.

Printed Version: \$77.00
CD-Rom Version: \$110.00

Note: These Instructions are a guide only. Allshelter is not liable for any damages or injuries resulting from steps followed in these Instructions.

It is the Installers Responsibility to generate any SWMS and RISK ASSESSMENTS required before the Installation of the Shelter Kit.

We recommend that you provide Training and enforce Safeguards such as PPE and Height Safety Equipment during the Installation Process.

* This Assembly Instruction Manual and any design, drawings, photos and procedures are copyright and shall not be copied, reproduced or scanned without the written consent of Allshelter *

ALLSHELTER ASSEMBLY INSTRUCTIONS & ASSEMBLY STEPS INDEX

CONTENTS

Description	Page
Cover Page	1
Safety Notice	2
Contents Page	3
Kit Contents Checklist	4 – 6
Plan Views and Dimensions Content Page	7
Assembly Steps and Procedures	8 – 26

Assembly Steps Index	Page
STEP 1: <u>CONTAINER</u> Placement	8
STEP 2: Welding of <u>BRACKETS</u> to <u>CONTAINERS</u>	8 – 9
STEP 3: Application of <u>FRAMEGUARD</u> to <u>HOOPS</u>	10 – 11
STEP 4: Assembly of Framework	11
STEP 5: Individual lifting of Curved Arches	12
STEP 6 & 7: Installation of <u>BRACING</u>	13 – 15
STEP 8: Checking for Rub Points	15
STEP 9 -15: Installing and fastening <u>TARP</u>	16 – 26

CONTAINER MOUNTED SHELTER EQUIPMENT CHECKLIST

Note: Please use this checklist to identify all the kit parts before installing the Shelter.

Customer: Expressway Spares

Shelter Code: CALS 21-6/12A

ITEMS	QTY	DESCRIPTION
HOOPS (F)	(F1) x 2, (F2) x 2, (F3) x 6, (F4) x 2, (F5) x 2, (F6) x 2, (F7) x 2, (F8) x 6, (F9) x 2, (F10) x 2, (F11) x 6, (F12) x 6, (F13) x 9	50 x 4 SHS Steel Members. Join Together to Form Main Frame
TEES (T)	(T1) x 42	Hoop (F) Sleeve-Joint Connectors
M8 x 60 BOLT AND NYLOCK	86	To Fasten Hoops (F) to Tees (T)
OUTSIDE MOUNTING BRACKETS (HB)	(HB1) x 2, (HB2) x 10, (HB3) x 2	To be welded to Customers Containers to provide a Hoop (F) Attachment Point
INSIDE MOUNTING BRACKETS (CB)	(CB) x 14	To be Welded to Customers Containers to Provide a Column (C) attachment Point
FRAME SUPPORT COLUMNS (C)	(C) x 14	Inside Mounting Bracket (CB) to Hoop (F) Connectors
M16 x 50 STRUCTURAL BOLT, WASHER & NUT	30	Column (C) and Mounting Bracket (HB) to Hoop (F) Fasteners
M12 x 75 BOLT AND NYLOCK NUT	15	Column (C) to Inside Mounting Bracket (CB) Fasteners

V-BRACE PIPES (RB)	(RB1) x 28	42Ø CHS – Squashed and Punched both ends. Bolt between HOOPS (F) on the end Bays
LONGITUDINAL BRACES (BR)	(BR) x 36	34Ø CHS – Squashed and Punched both ends. Bolt between TEE (T) tags in every Bay
M12 x 40 STRUCTURAL BOLT, WASHER AND NUT	100	To Attach V-Brace Pipes (RB) to Hoops (F) and Braces (BR) to Tees (T)
TARP (White/Silver)	1	Main Cover
TARP PIPES	(TP1) x 6, (TP2) x 2	42Ø CHS (TP1) with Insert, (TP2) without Insert - Provide Attachment Points for cover Tension
WAFER SCREWS	80	Tarp Pipe (TP) and Curved Pipe (CP) Fasteners
RATCHETS	(502E) x 14	Cover Tensioners – Attaches Tarp to Framework and Provides Tension
CURVED TARP PIPES (CP)	(CP1) x 14, (CP2) x 2	Lengthways Tarp Tension Pipes
RATCHETS	(362E) x 30	Curved Tarp Pipe Tensioners
SWIVEL J-HOOK RATCHETS	4	Attaches Webbing to Corner Mounting Brackets and Provides Lengthways Tarp Tension
FRAMEGUARD 48mm	17	Tarp Protection Tape. Apply to Hoops (F)

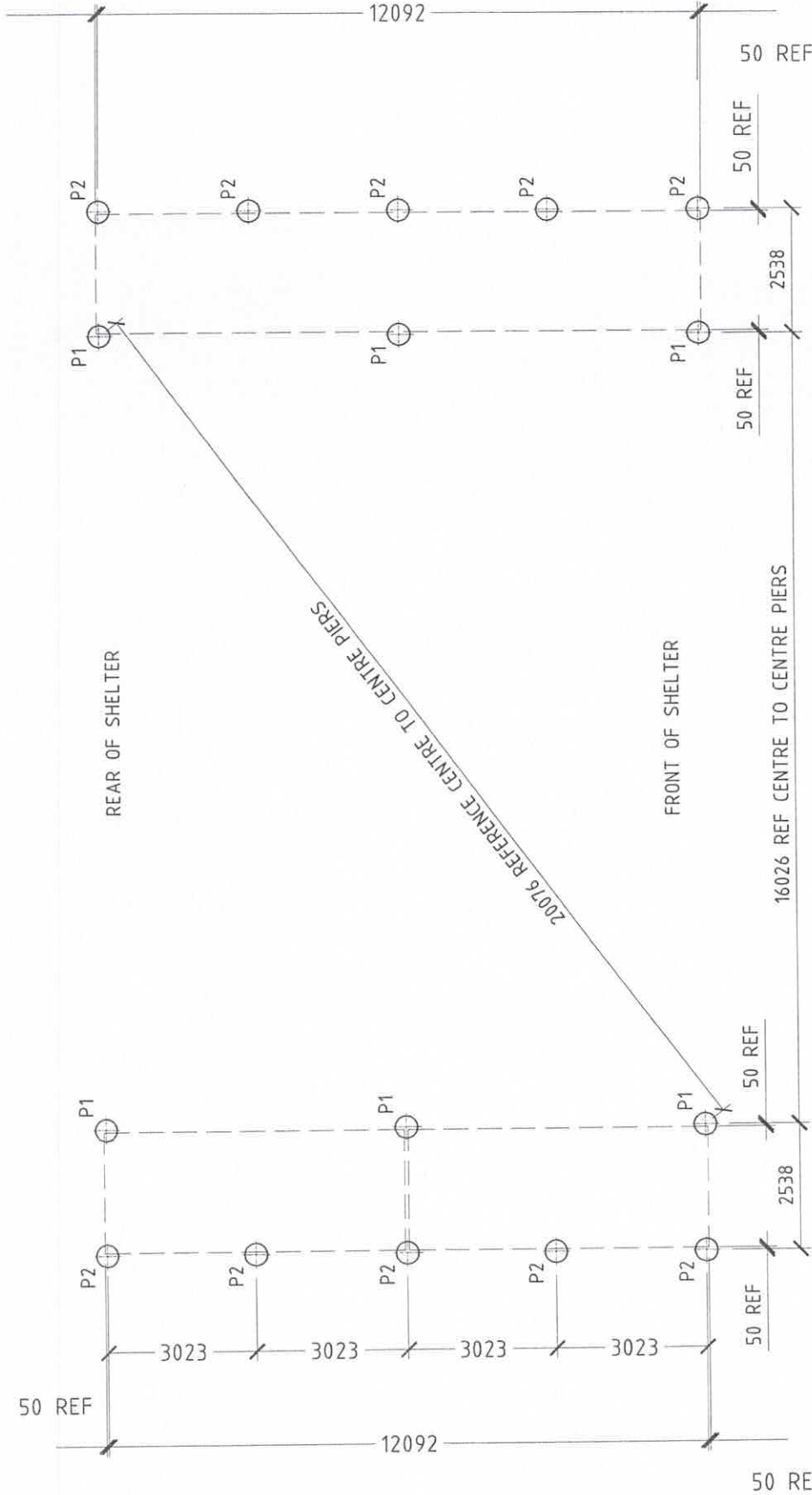
DUCT TAPE	3	To Secure Frameguard on Joins and the End of the Hoops (F) and prevent it from Peeling off.
SINGLE EDGED ROPE TRACK	(SIDE FLAP) x 2	Aluminium Extrusion used to Fasten the Tarp Flap, to the Containers. Each 'run' Bundled Together and Marked Accordingly
TEK SCREWS	90	Single Edged Rope Track to Container Fasteners

ALLSHELTER PLAN VIEWS AND DIMENSIONS

CONTENTS

Description	Drawing Number
Pier Layout & Marking Plan	01
Pier Details	02
Container Layout & Marking Plan	03
Mounting Bracket Layout and Marking Plan	04
Hoop Layout and Marking Plan	05
Front View	06
Side View	07
Frame Assembly	08

50 REF



REAR OF SHELTER

20076 REFERENCE CENTRE TO CENTRE PIERS

FRONT OF SHELTER

16026 REF CENTRE TO CENTRE PIERS

PIER LAYOUT & MARKING PLAN

CLIENT: EXPRESSWAY SPARES

DATE: 24/09/08

SCALE: 1:125 UNO

PAGE: 01

Drawn: DMR

Drawn: DMR

Date: 24/09/08

Scale: 1:125 UNO

Page: 01

The design and drawings shown hereon are copyright and shall not be copied, reproduced, scanned, stored in any electronic database, re-transmitted, disclosed, distributed, or commercialised without the written consent of Allshelter. Allshelter remains the property of Allshelter and this drawing or information remains the property of Allshelter and may not be used for any other purpose than that for which it is supplied. Allshelter will not hesitate to take appropriate legal action if its rights in this respect are infringed.



LOT 2 NARRANDERA STREET LAKE CARGELLOGO NSW 2872
 Ph. 02 6898 2244 Fax. 02 6898 2311 ABRN 58 517 818 986

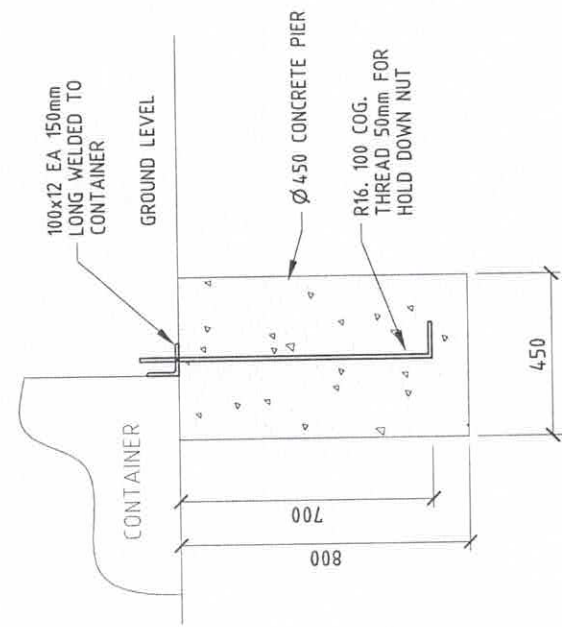
CALS 21-6/12-A CONTAINER SHELTER
 PIER LAYOUT & MARKING PLAN

TITLE:

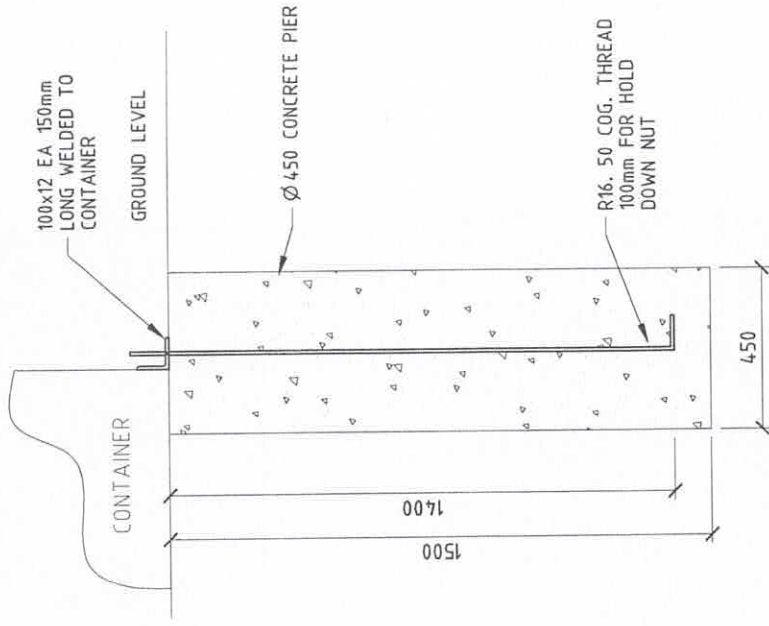
BALLAST OPTION

P1 - 270 kg/m ALONG LENGTH OF CONTAINER PLACED ALONG EDGE OF CONTAINER.

P2 - 1320 kg/m ALONG LENGTH OF CONTAINER PLACED ALONG EDGE OF CONTAINER.



PIER DETAIL (P1)



PIER DETAIL (P2)

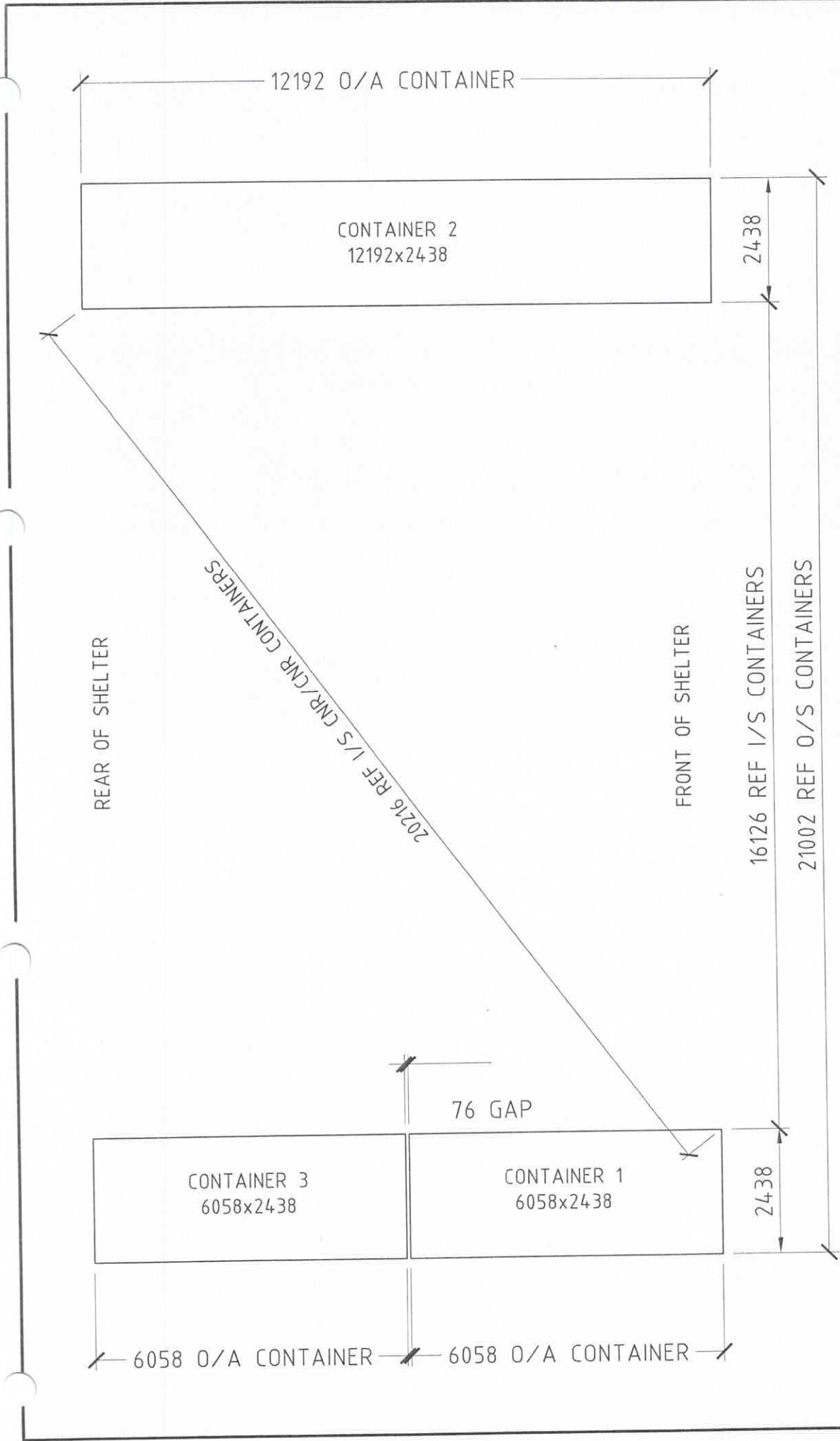
Draw: F:\DRGS\VALI_SHELTER\A\Shelter\Special\VALI_SHELTER_2008\EXPRESSWAY SPARES 11.370.dwg Date: 23 Sep 2008 Time: 11:41

The design and drawings shown herein are copyright and shall not be copied, reprinted, reproduced, stored in any electronic database, or otherwise disclosed, distributed, or commercialised without the written consent of Allshelter.
This drawing and information remains the property of Allshelter and may not be used for any other purpose than that for which it is supplied.
Allshelter will not hesitate to take appropriate legal action if its rights in this respect are infringed.

ALLSHELTER™
 LOT 2 NARRANDERA STREET LAKE CARGELIGO NSW 2672
 Ph: 02 6699 2244 Fax: 02 6889 2311 ABN 58 317 819 396

CLIENT:	EXPRESSWAY SPARES		
DRAWN:	DMR	SCALE:	1:10 UNDO
DATE:	24/09/08	PAGE:	02

TITLE:
CALS 21-6/12-A CONTAINER SHELTER
PIER "P1" & "P2" - DETAILS



CONTAINER LAYOUT & MARKING PLAN

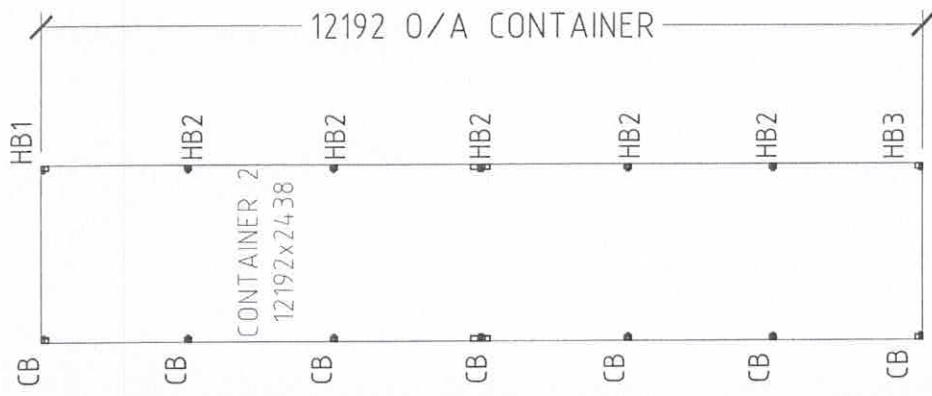
<p>CLIENT: EXPRESSWAY SPARES</p>		<p>TITLE: CAL5 21-6/12-A CONTAINER SHELTER CONTAINER LAYOUT & MARKING PLAN</p>
<p>DRAWN: DMR</p>	<p>DATE: 24/9/08</p>	<p>SCALE: 1:100 UNO</p>
		<p>PAGE: 03</p>

The design and drawings shown herein are copyright and shall not be copied, reproduced, scanned, stored in any electronic retrieval system, transmitted, disseminated, distributed, or commercialised without the written consent of Allshelter. This design and information remains the property of Allshelter and may not be used for any other purpose than that for which it is supplied. Allshelter will not hesitate to take appropriate legal action if its rights in this respect are infringed.

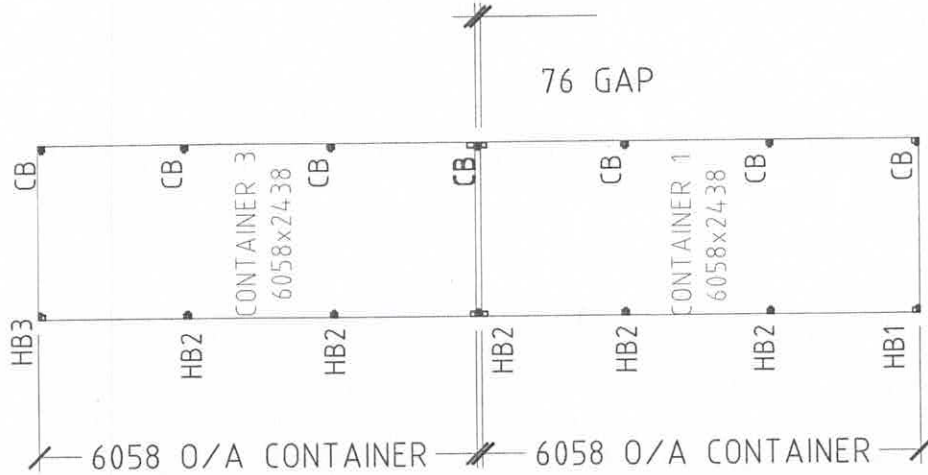


ALLSHELTER™
LOT 2 NARRANDERA STREET LAKE CARGELILGO NSW 2872
Ph. 02 6898 2244 Fax. 02 6898 2311 ABN 88 917 819 396

Dwg: F:\DRGS\VAL SHLTER\Aishelter\SPECIALS\VALSHELTER 2008\EXPRESSWAY SPARES 11370.dwg Date: 23 Sep 2008 Time: 11:41



REAR OF SHELTER



FRONT OF SHELTER

HOOP BRACKET "HB" LAYOUT & MARKING PLAN

Dwg: F:\DRCS\VAL SHELTER\VALSHelter\2008\EXPRESSWAY_SPARES_11370.dwg Date: 23 Sep 2008 Time: 11:41

The design and drawings shown hereon are copyright and shall not be copied, reproduced, scanned, stored in any electronic database, re-transmitted, disclosed, distributed, or commercialised without the written consent of Allshelter. This drawing and information remains the property of Allshelter and shall not be used for any other purpose than that for which it is supplied. Allshelter will not hesitate to take appropriate legal action if its rights in this respect are infringed.

TITLE:

EXPRESSWAY SPARES

CALS 21-6/12-A CONTAINER SHELTER
"HB" LAYOUT & MARKING PLAN

CLIENT: DMR DATE: 24/9/08 SCALE: 1:100 UNDO PAGE: 04

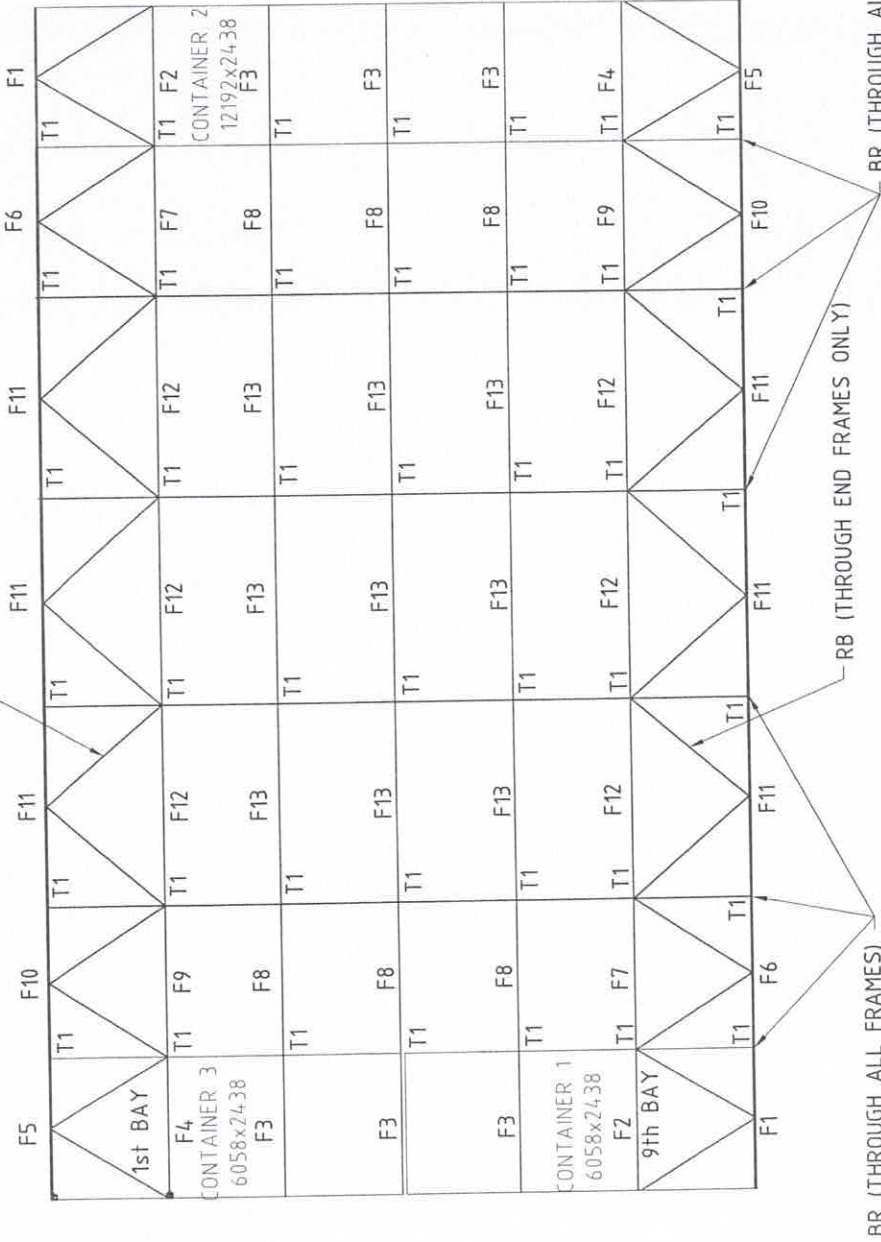


LOT 2 NARRANDERA STREET LAKE CARGELLIGO NSW 2872
Ph. 02 6886 2244 Fax. 02 6886 2311 ABN 56 317 819 396

7 FRAMES / 6 BAYS @ 2024 BRACKET CENTRES

REAR OF SHELTER

RB (THROUGH END FRAMES ONLY)



BR (THROUGH ALL FRAMES)

BR (THROUGH ALL FRAMES)

FRONT OF SHELTER

HOOP LAYOUT & MARKING PLAN

Draw: F:\DRGS\VALL_SHELTER\VALLSHELTER\SPECIALS\VALLSHELTER 2008\EXPRESSWAY SPARES 11370.dwg Date: 23 Sep 2008 Time: 11:41

This design and drawings shown herein are copyright and shall not be copied, reproduced, scanned, stored in any electronic database, re-transmitted, disclosed, distributed, or commercialised without the written consent of Allshelter.
 This drawing and information remains the property of Allshelter and may not be used for any other purpose than that for which it is supplied.
 Allshelter will not hesitate to take appropriate legal action if its rights in this respect are infringed.

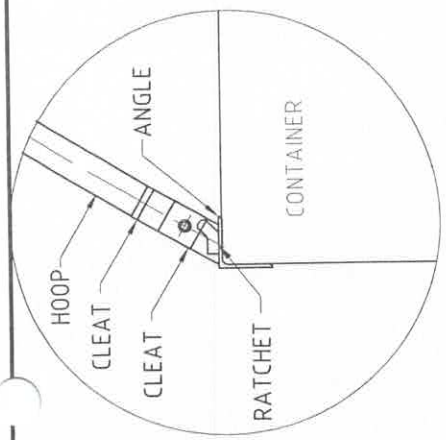
CLIENT: EXPRESSWAY SPARES		SCALE: 1:125 UNO		PAGE: 05	
DRAWN: DMR	DATE: 24/9/08	SCALE: 1:125 UNO		PAGE: 05	

TITLE:

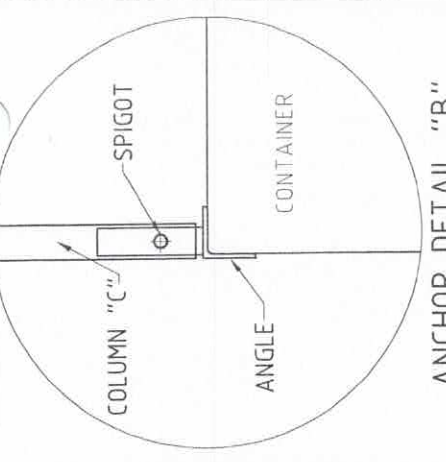
CALS 21-6/12-A CONTAINER SHELTER
 HOOP LAYOUT & MARKING PLAN



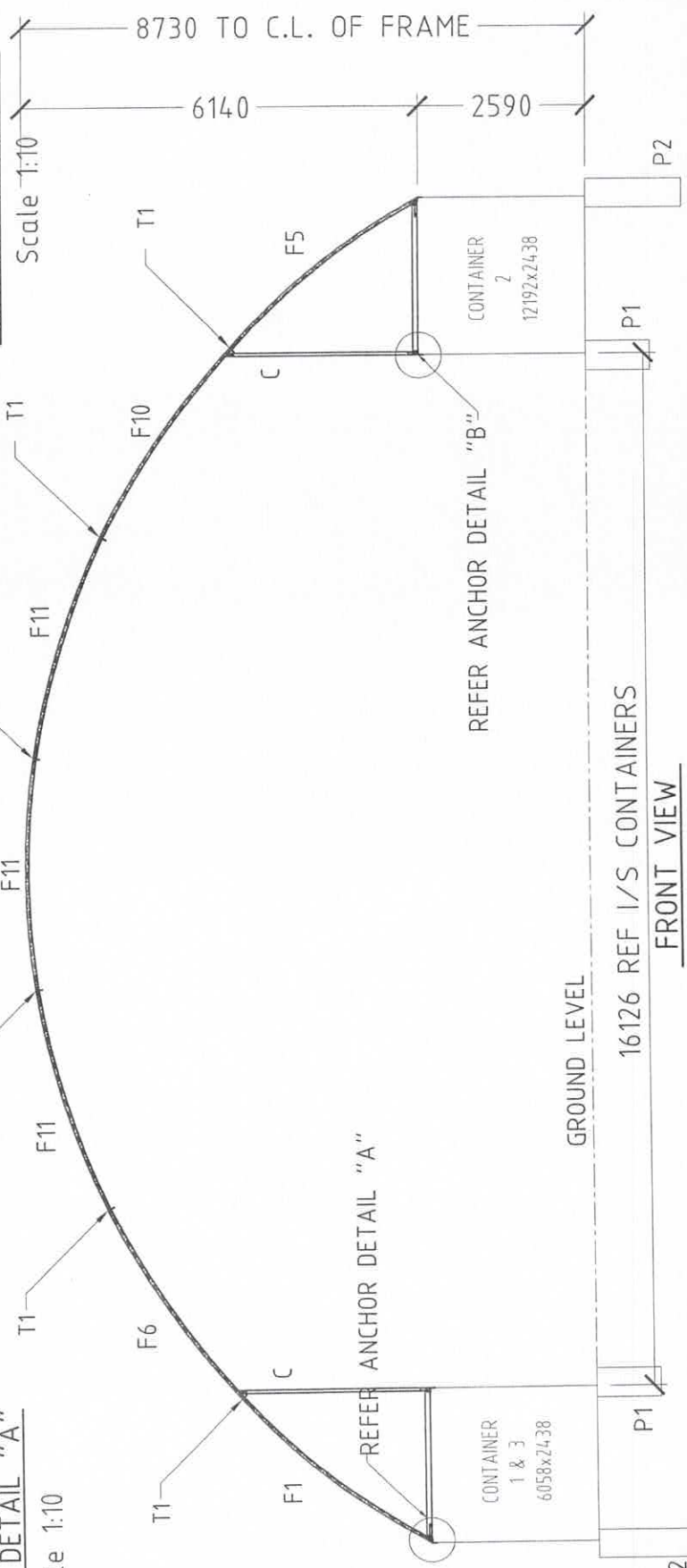
LOT 2 NARRANDERA STREET LAKE CARGELLIGO NSW 2672
 Ph. 02 6998 2244 Fax. 02 6998 2311 ABA 58 58 317 819 396



ANCHOR DETAIL "A"
Scale 1:10



ANCHOR DETAIL "B"
Scale 1:10



16126 REF I/S CONTAINERS

FRONT VIEW

DRG: F:\DRCS\ALL SHELTER\ALLSHELTER\2008\EXPRESSWAY SPARES 11370.dwg Date: 23 Sep 2008 Time: 11:41

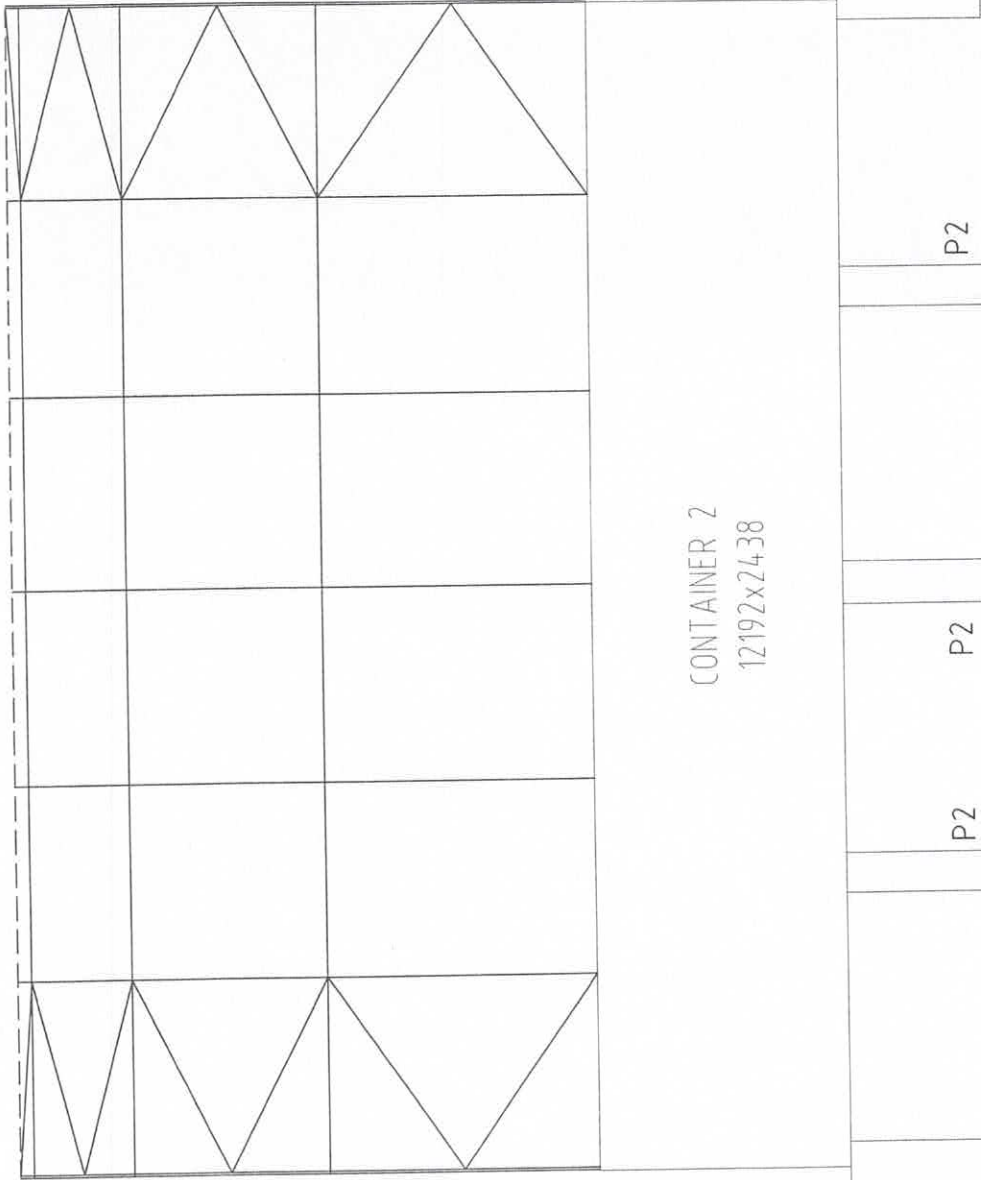
The design and drawings shown herein are copyright and shall not be copied, reproduced, scanned, stored in any electronic database, re-transmitted, disclosed, distributed, or commercialised without the written consent of Allshelter. This drawing and information remains the property of Allshelter and may not be used for any other purpose than that for which it is supplied. Allshelter will not hesitate to take appropriate legal action if its rights in this respect are infringed.

ALLSHELTER™
 LOT 2 NARRANDERA STREET LAKE CARGELLIGO NSW 2672
 Ph. 02 6698 2244 Fax. 02 6698 2311 ABN 58 517 819 396

CLIENT:	EXPRESSWAY SPARES	SCALE:	1:100 UNO	PAGE:	06
DATE:	24/9/08	SCALE:	-----	PAGE:	06
DRAWN:	DMR	SCALE:	1:100 UNO	PAGE:	06

TITLE: CALS 21-6/12-A CONTAINER SHELTER
FRONT VIEW

REAR OF SHELTER



FRONT OF SHELTER

CONTAINER 2
12192x2438

P2

P2

P2

P2

P2

SIDE VIEW

TITLE:

CALS 21-6/12-A CONTAINER SHELTER
SIDE VIEW

CLIENT:

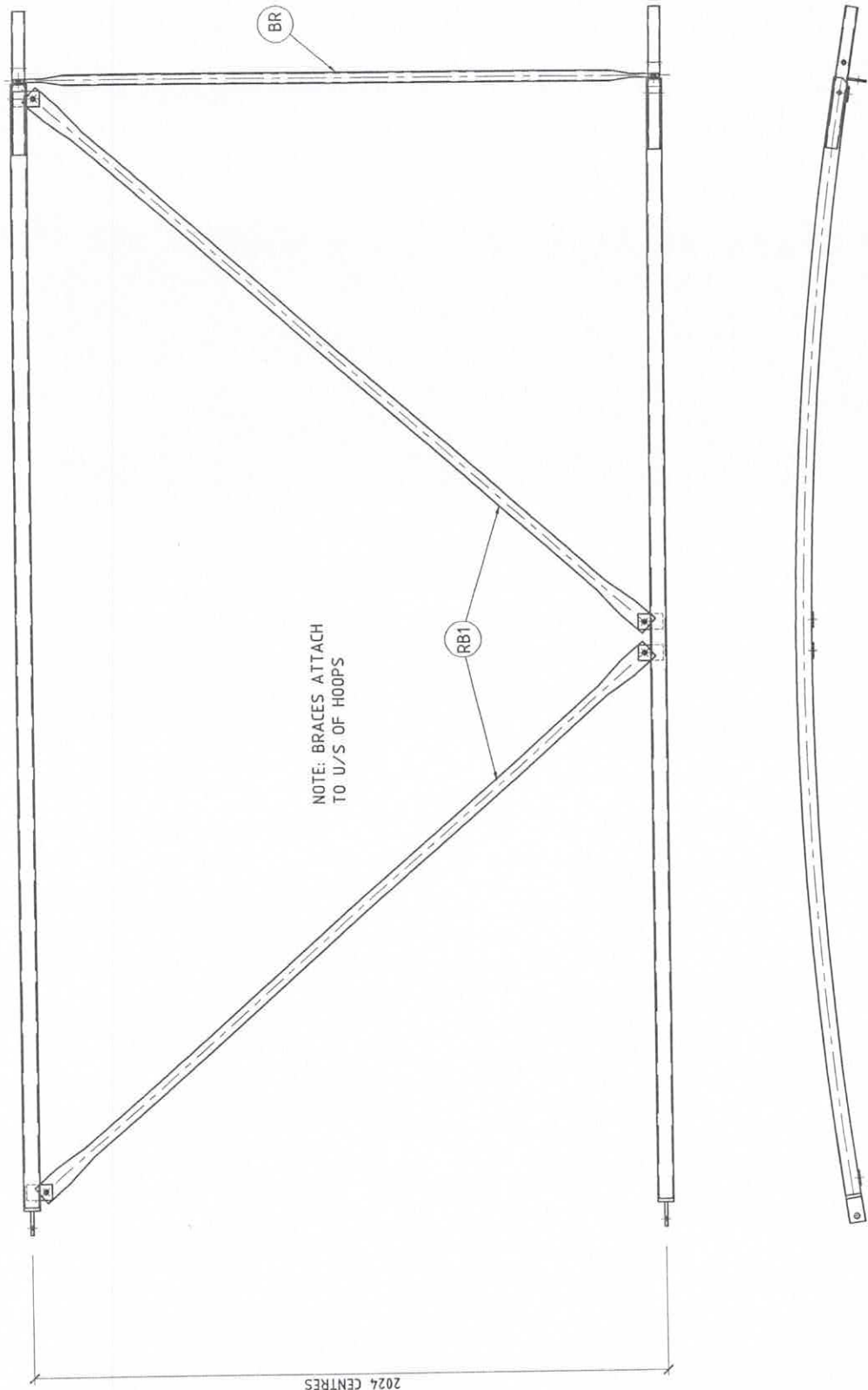
EXPRESSWAY SPARES

DRAWN:	DATE:	SCALE:	PAGE:
DMR	24/9/08	1:75 UNO	07

Dir: F:\DRCS\AIL SHELTER\AllShelter\Specials\ALLSHELTER_2008\EXPRESSWAY SPARES 11370.dwg Date: 23 Sep 2008 Time: 11:41

The design and drawings shown hereon are copyright and shall not be copied, reproduced, scanned, stored in an electronic database, re-transmitted, distributed, or commercialised without the written consent of AllShelter.
This drawing and information remains the property of AllShelter and may not be used for any other purpose than that for which it is supplied.
AllShelter will not hesitate to take appropriate legal action if its rights in this respect are infringed.

ALLSHELTER™
LOT 2 NARRANDERA STREET LAKE CARGELLIGO NSW 2672
Ph. 02 6886 2244 Fax. 02 6886 2311 ABN 59 317 818 386



NOTE: BRACES ATTACH TO U/S OF HOOPS

2024 CENTRES

CURVED HOOP END BRACING ASSEMBLY

Dwg. F:\DRGS\VALI_SHELTER\VALI\Shelter\SPECIALS\ALLSHELTER 2008\EXPRESSWAY SPARES 11.370.dwg Date: 23 Sep. 2008 Time: 11.41

The design and drawings shown hereon are copyright and shall not be copied, reduced, scanned, stored in any electronic database, retransmitted, disclosed, distributed, or commercialised without the written consent of Allshelter.
 This drawing and information remains the property of Allshelter and may not be used for any other purpose than that for which it is supplied.
 Allshelter will not hesitate to take appropriate legal action if its rights in this respect are infringed.

ALLSHELTER™
 LOT 2 MARRANDERA STREET LAKE CARGELIGO NSW 2672
 Ph. 02 6698 2244 Fax. 02 6698 2311 ABN 58 317 819 396

CLIENT:		EXPRESSWAY SPARES	
DRAWN:		SCALE:	PAGE:
DMR	DATE:	1:20 UNO	08
	24/9/08		

TITLE:
 CALS 21-6/12-A CONTAINER SHELTER
 CURVED HOOP "FRAME" - ASSEMBLY

ASSEMBLY STEPS & PROCEDURES

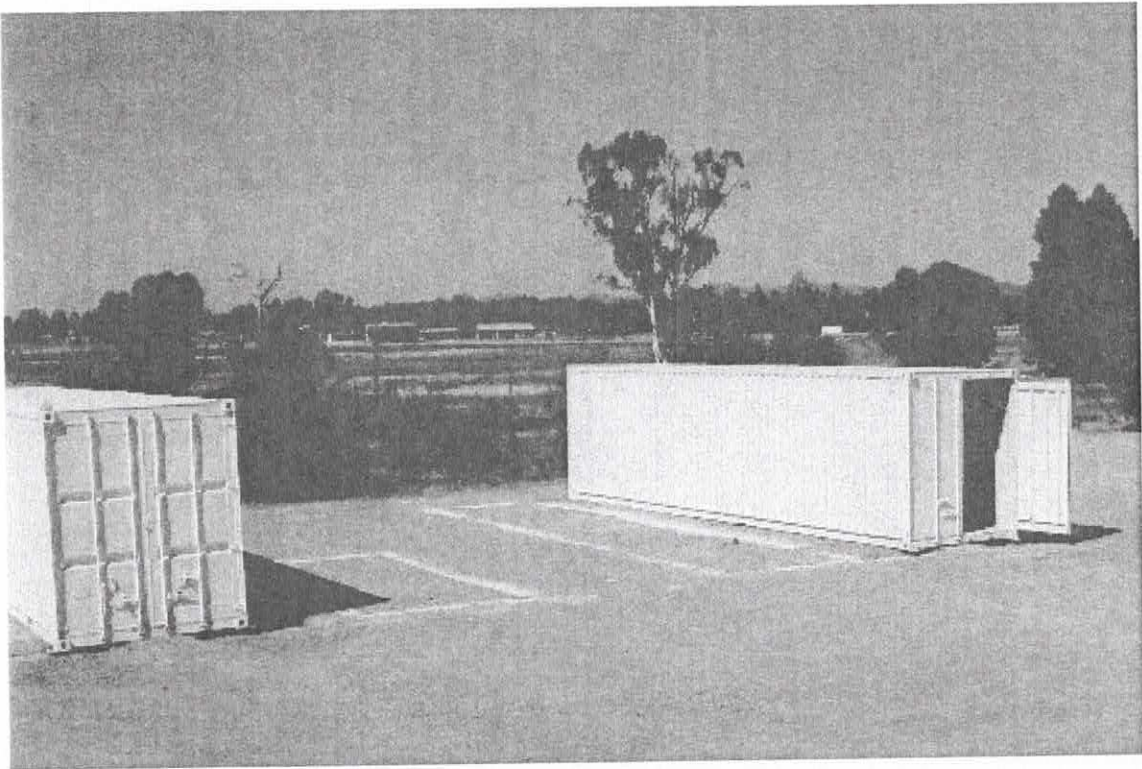
Note: Photos shown in this Assembly Instruction Manual may not resemble the Shelter Kit exactly. Use them as a guide only.

STEP 1:

- Dig Pier holes as shown on the PIER LAYOUT & MARKING PLAN and the PIER DETAIL page.
- Place your Containers over the Pier holes as shown on the CONTAINER LAYOUT & MARKING PLAN, attach the 'hold down bolts' and then pour concrete into the holes.
- The Customer is required to supply the 'hold down bolts'

PLACING CONTAINERS

(Ballast may be used instead of Piers – see the PIER DETAIL)

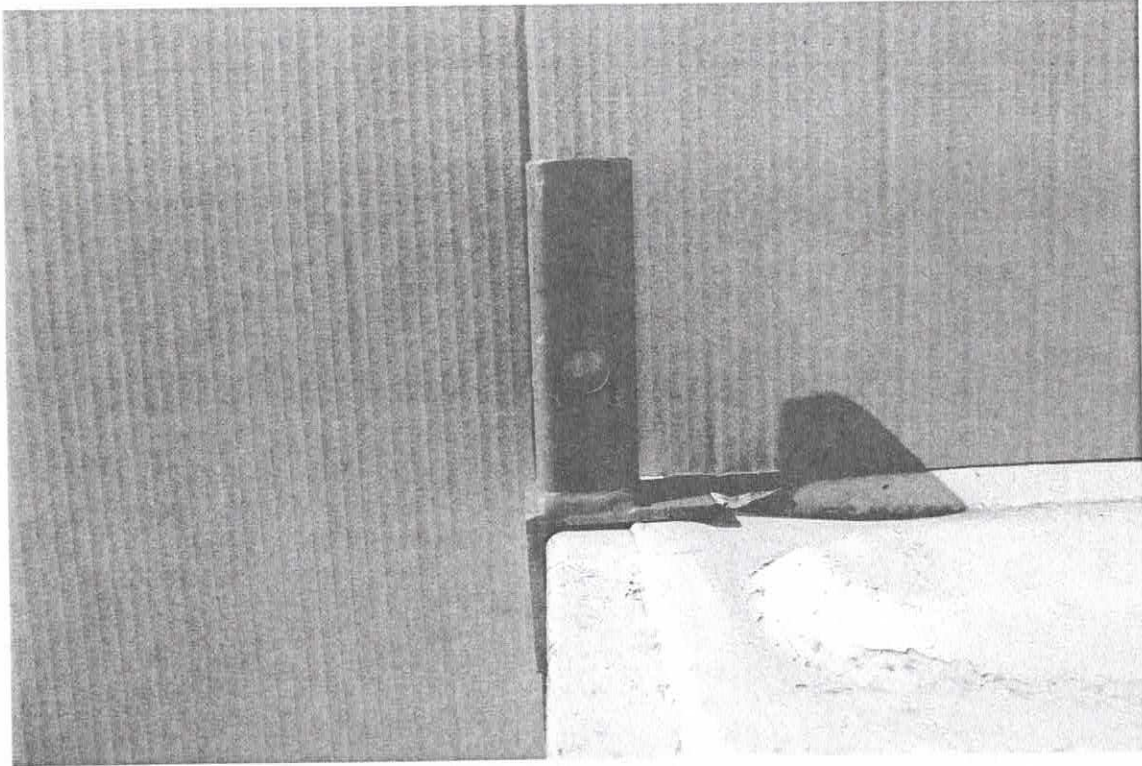


STEP 2:

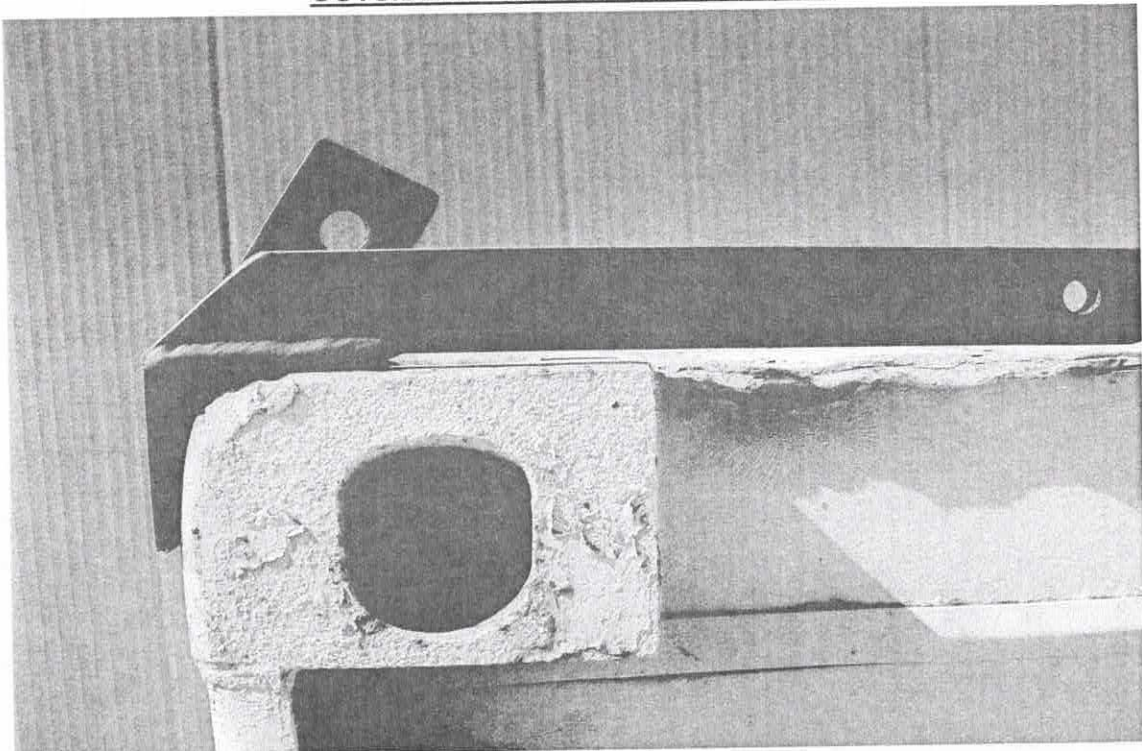
- It is essential that you understand the placement of each part of the kit before installation.
- The 'ALLSHELTER PLAN VIEWS AND DIMENSIONS' pages show all required information.
- Mark out where the BRACKETS are to be located, then weld them securely into position – straight and square.
- **The Corner BRACKETS sit on top of the Container Castings level with the end of the Container.**
- The Container Castings may be higher than the rest of the Container by up to 40mm.
- **It is not crucial for the Brackets to all be at the same level.**

- For a neater fit and finish you may wish to pack the intermediate BRACKETS up level with the Corner BRACKETS using suitable steel spacers, or weld a Steel Member the full length of your Container between the Container Castings at the same level as the Container Castings.
- All BRACKETS must be fully welded to the Containers. This is of utmost structural importance!
- The following Photo's show the difference between the INSIDE MOUNTING BRACKETS (CB) and the OUTSIDE MOUNTING BRACKETS (HB).

INSIDE MOUNTING BRACKET (CB)



OUTSIDE MOUNTING BRACKET (HB)

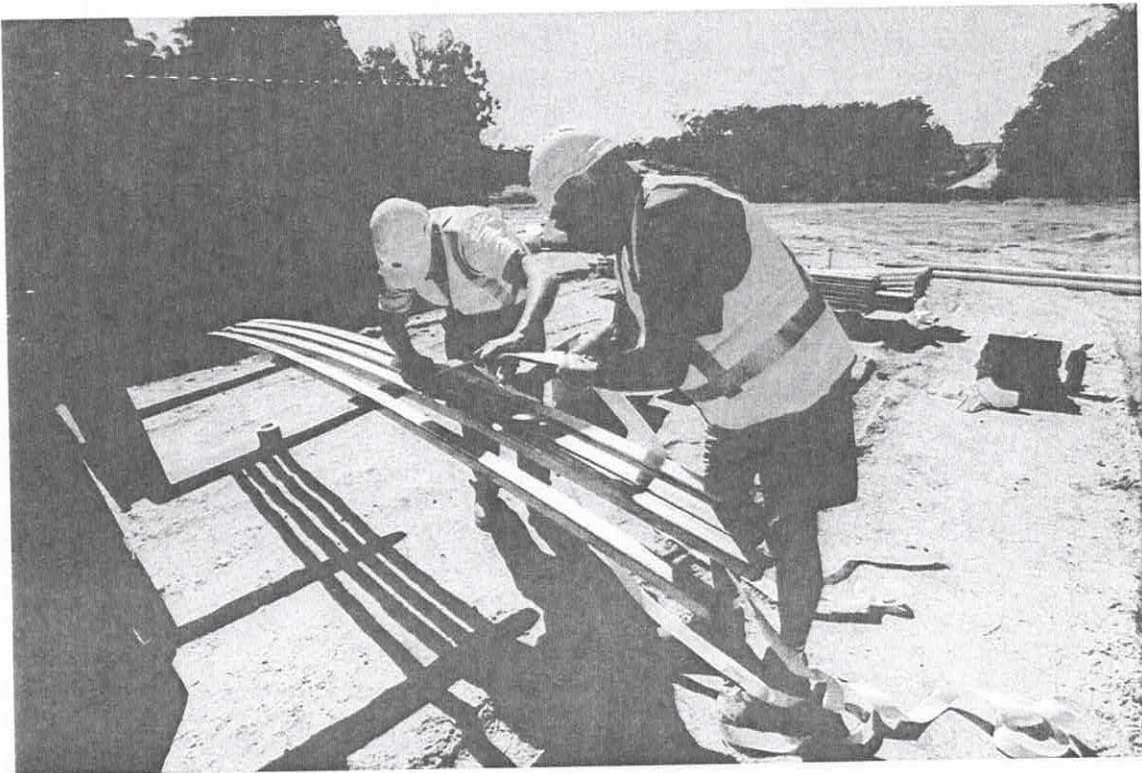


- Place all the COLUMNS (C) on the INSIDE MOUNTING BRACKETS.
- Fasten them in place with M12 x 75 Bolts and Nylocks.
- The curved arches are installed in STEP 5

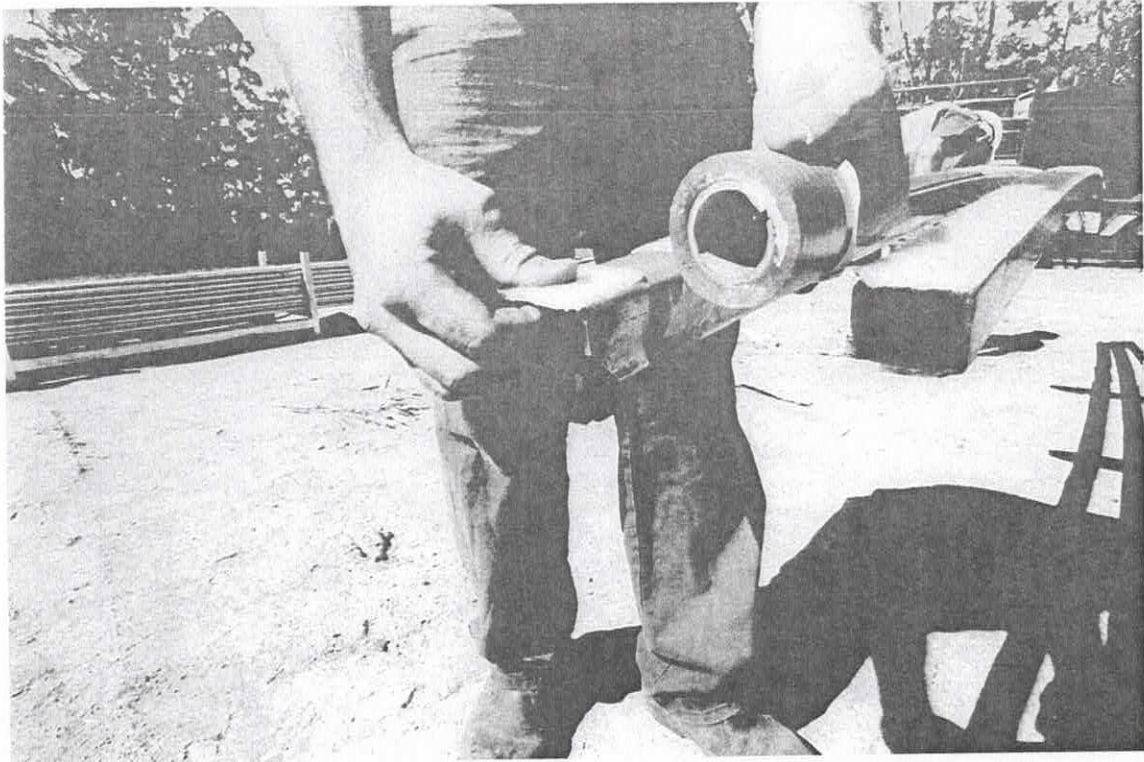
STEP 3:

- Apply the FRAMEGUARD to the HOOPS (F), as pictured below.
- Use the DUCT TAPE to secure the FRAMEGUARD on both ends of the hoop and on each join.
- Be careful not to put tape into the open ends of the HOOPS as this will hinder the insertion of the TEES (T).
- The FRAMEGUARD is to lengthen the life of your tarp and the DUCT TAPE is to prevent the FRAMEGUARD from peeling off when the main cover is pulled across the frame work.
- The HOOPS for the arches at either end of your Shelter have two runs of FRAMEGUARD – one on the top, and one on the outside face.
- The HOOPS for all the intermediate arches have only one run of FRAMEGUARD on top.

APPLYING FRAMEGUARD (PEEL THE PAPER OFF TO EXPOSE THE STICKY BACK)



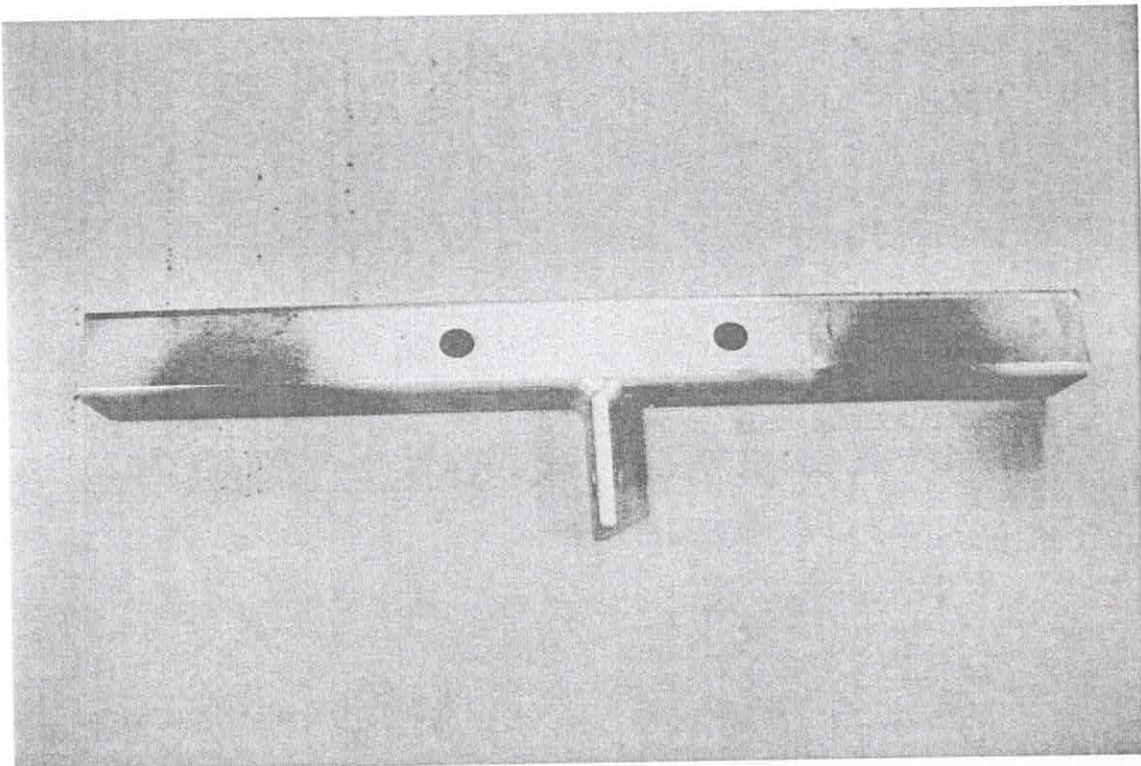
APPLYING DUCT TAPE TO ENSURE THE FRAMEGUARD STAYS ON



STEP 4:

- Join the frames together on the ground, with the TEES (T).
- The TEES are designed to be a snug fit and may require some force to drive them home.
- Ensure all the HOOPS are pushed together with no gap in between.

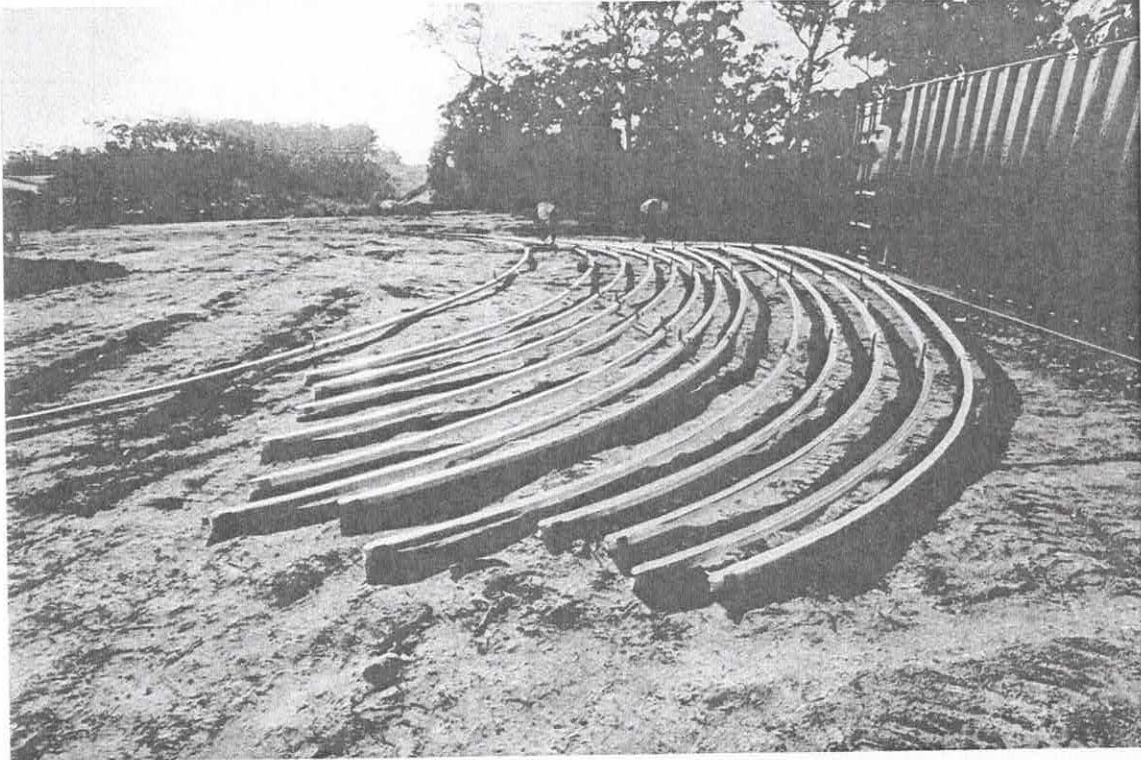
TEES (T)



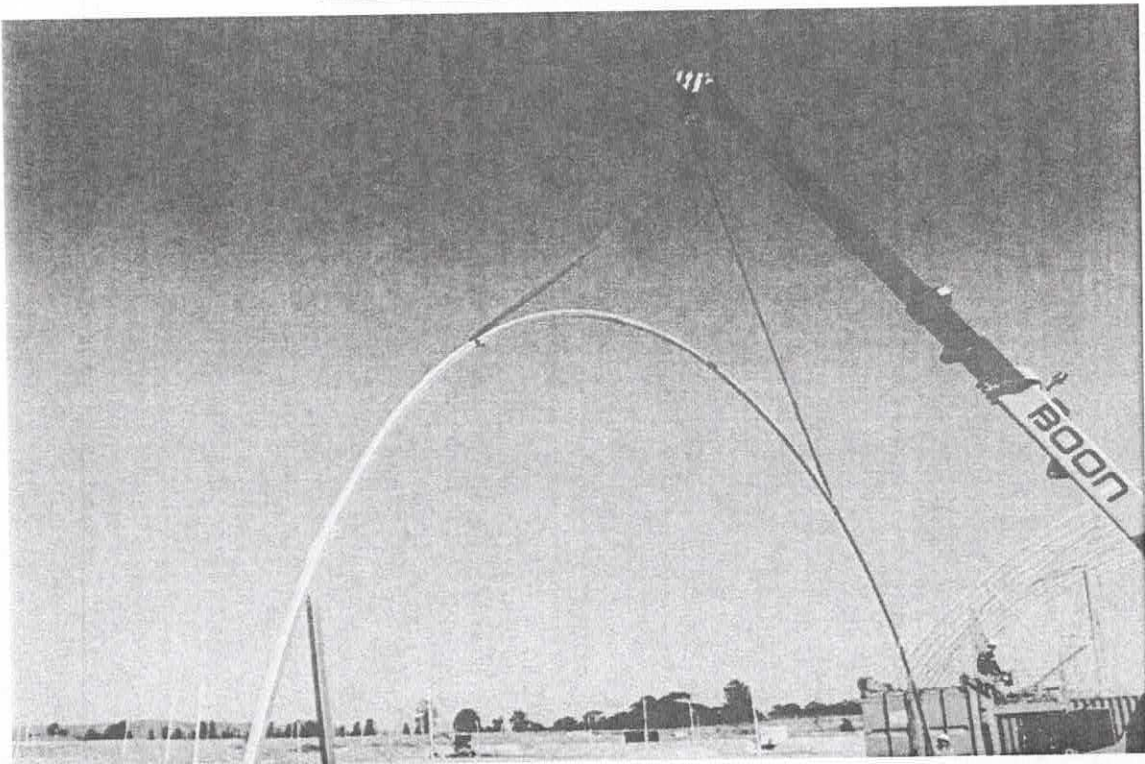
STEP 5:

- Once HOOPS are joined together, secure either side of the join with a M8 x 60 Bolt and Nylock.
- Then safely lift each individual; frame into place on the MOUNTING BRACKETS using appropriate lifting equipment.
- The HOOPS are then bolted to the MOUNTING BRACKETS and the COLUMNS with M16 x 50 Structural Bolts

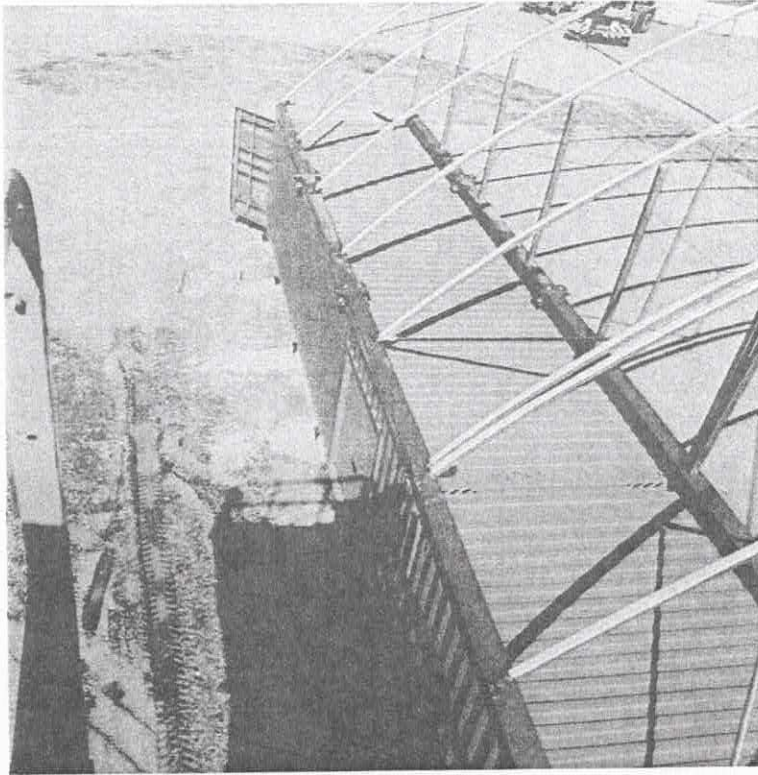
BOLTING HOOPS TOGETHER READY TO BE LIFTED



LIFTING FRAMEWORK INTO PLACE



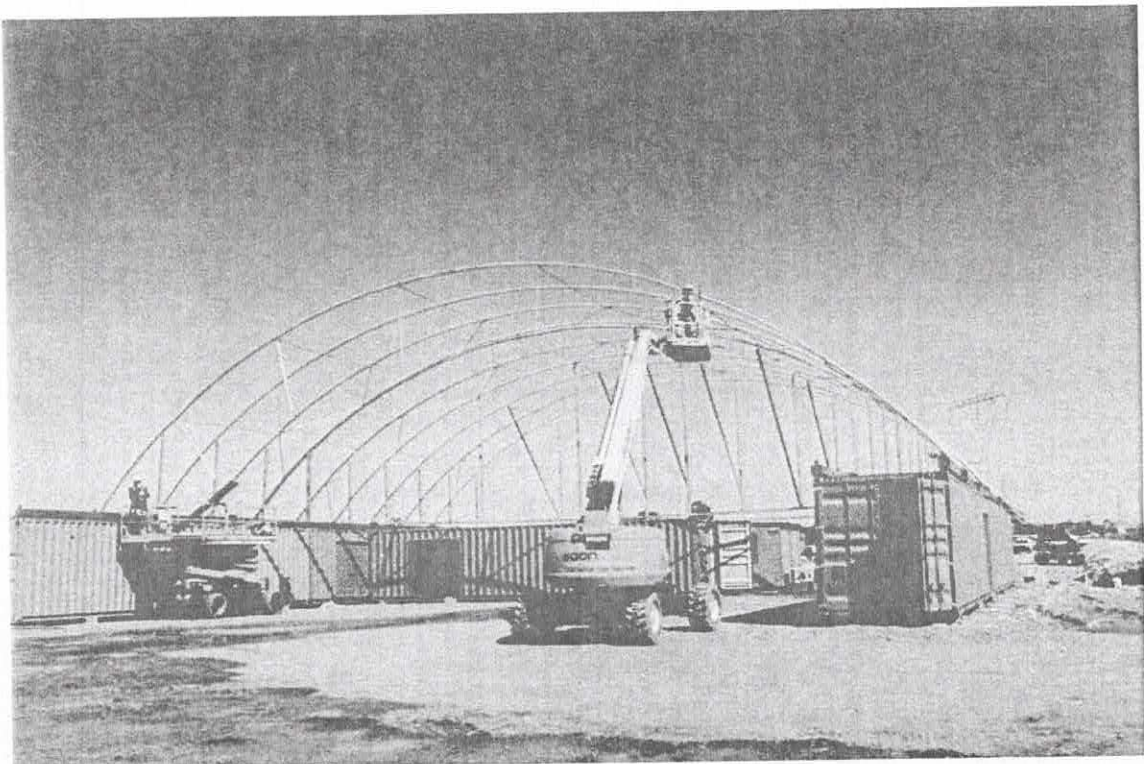
FRAMEWORK ATTACHED TO MOUNTING BRACKETS



STEP 6:

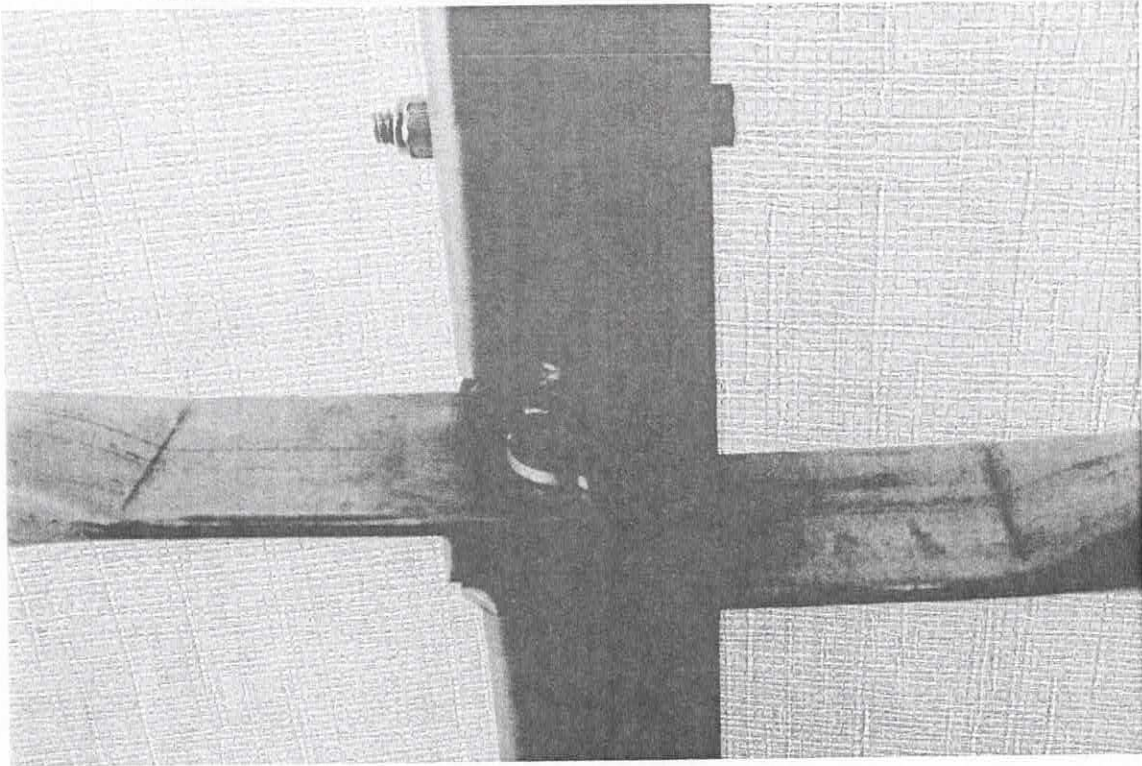
- As each frame is installed, bolt the LONGITUDINAL BRACES (BR) in place on the tee tags.
- Use the M12 x 40 Structural Bolts.

BOLTING ON LONGITUDINAL BRACING



- The LONGITUDINAL BRACES sit on alternate sides of the tag with the bolt fastening them together, brace-tag-brace.

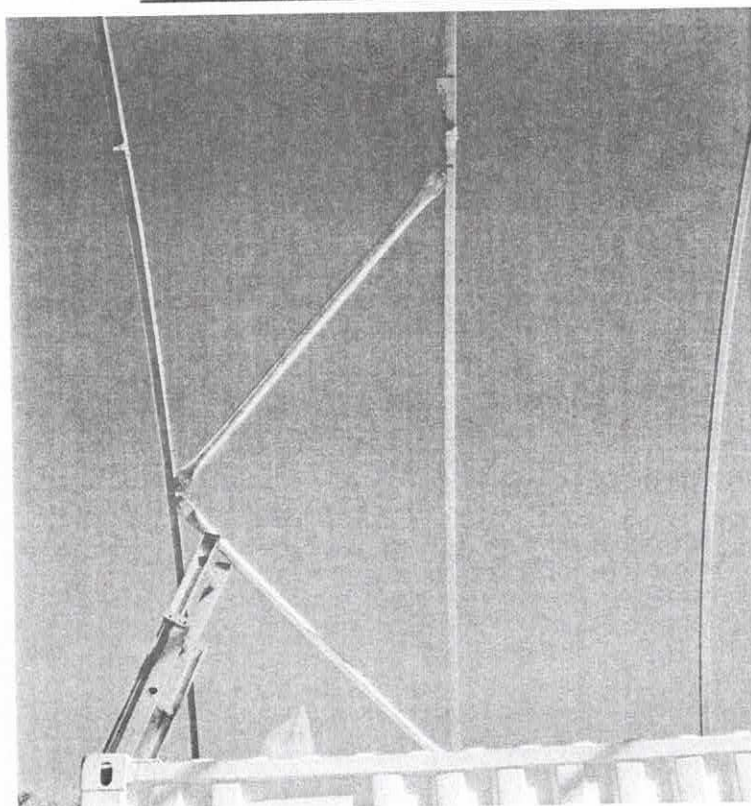
CLOSE-UP SHOWING BRACES (BR) BOLTED TO TEE TAG



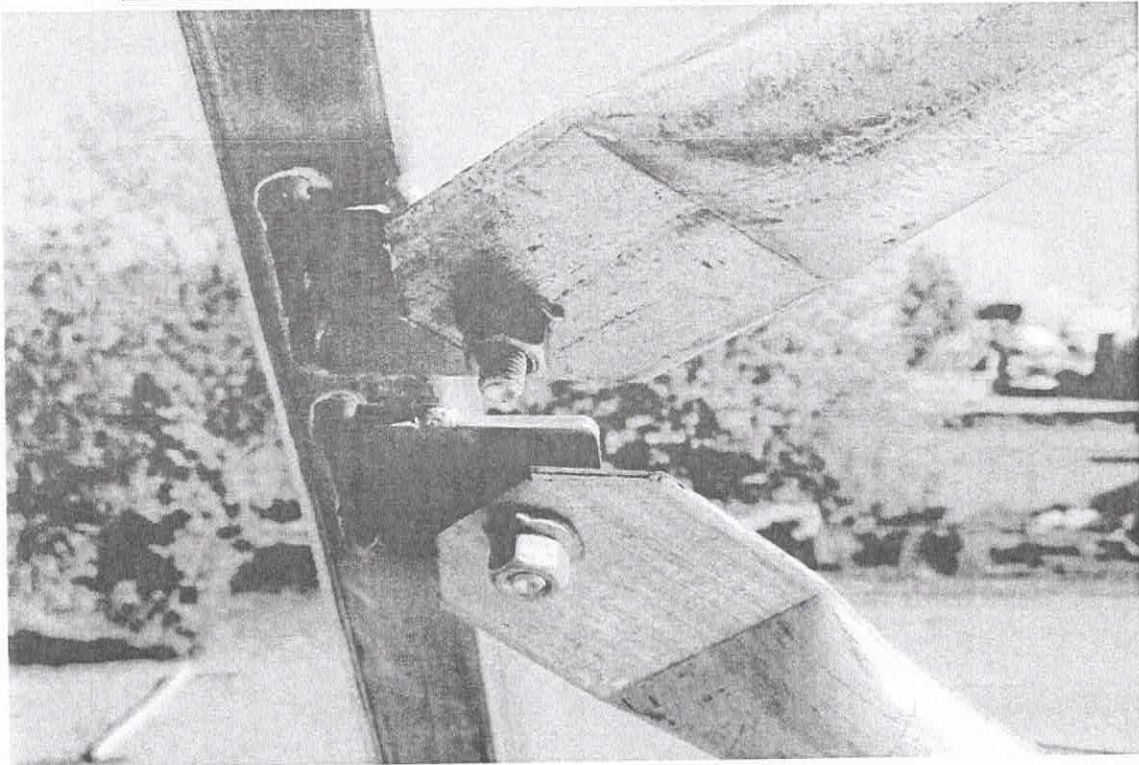
STEP 7:

- Bolt the V-BRACES (RB) to the tags welded on the HOOPS.
- Use M12 x 40 Structural Bolts.
- Ensure the bolts are pointing down and that the V-BRACE is underneath the tag.
- Once all the V-BRACES are in place loosely, go through and tighten the nuts securely.

V-BRACE (RB) BEING INSTALLED



CLOSE-UP SHOWING V-BRACE BOLTED UNDERNEATH PLATE



STEP 8:

- Check the structure for any sharp points which the tarp might rub on, then remove or cover them with FRAMEGUARD and DUCT TAPE.
- This is **VERY** important to prevent putting holes in or scratching the tarp.

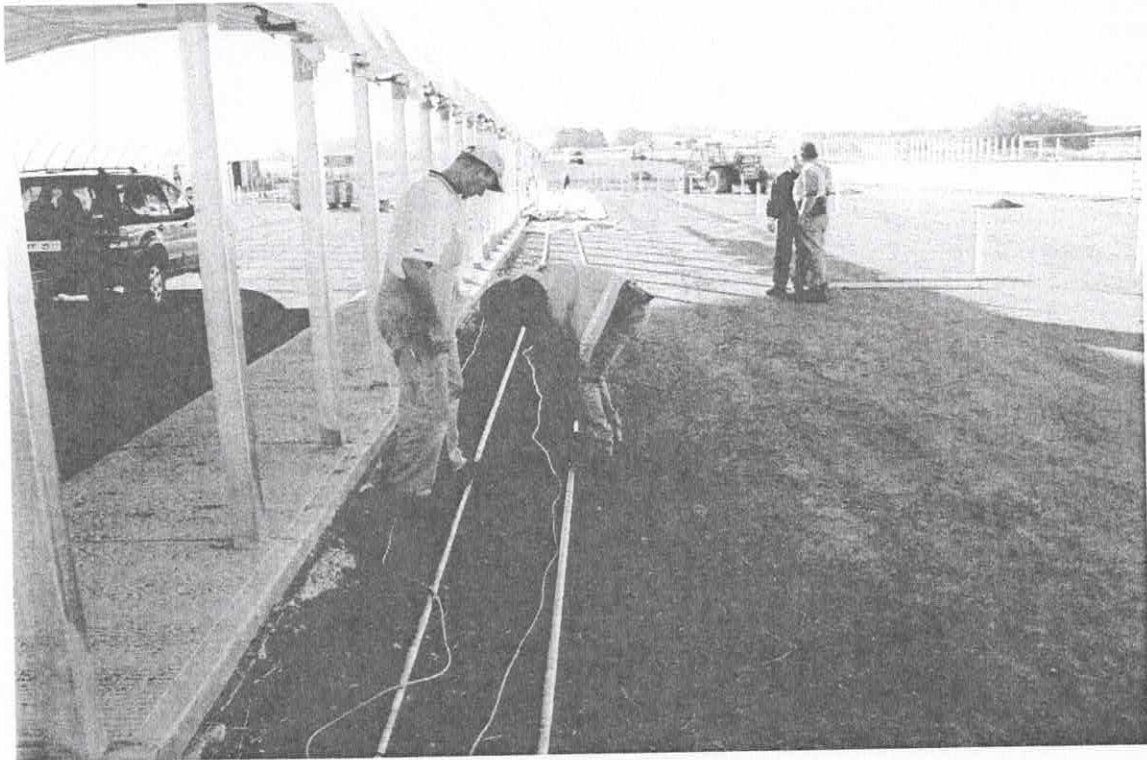
COVERING UP SHARP EDGES



STEP 9:

- The next step is the TARP.
- You will need a minimum of one rope every 3 metres to pull the TARP on a day with little wind.
- Hang a RATCHET STRAP on each MOUNTING BRACKET ready to secure the cover.
- Next join the TARP PIPES (TP) together using WAFER SCREWS
- You will end up with two full length TARP PIPES.
- These are to tension the cover.

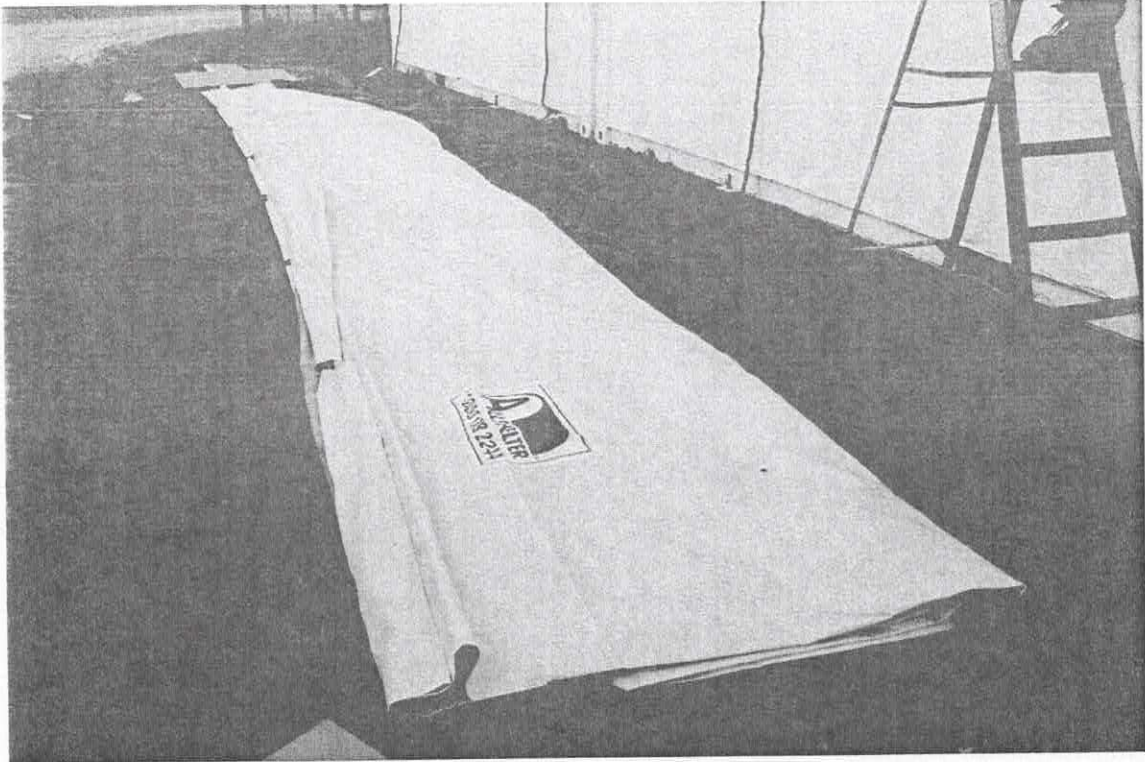
SCREWING TOGETHER TARP PIPES



STEP 10:

- Roll out the TARP along the side of the Shelter, and then thread the pipes through the sleeves that run along each side of the tarp.

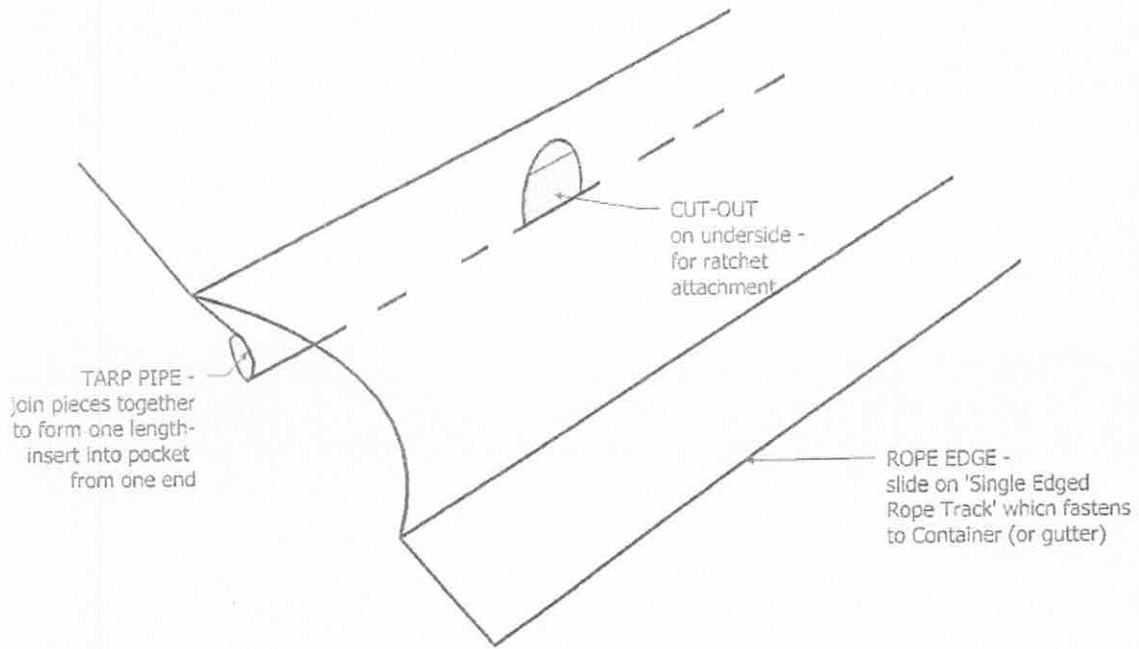
TARP ROLLED OUT ON GROUND



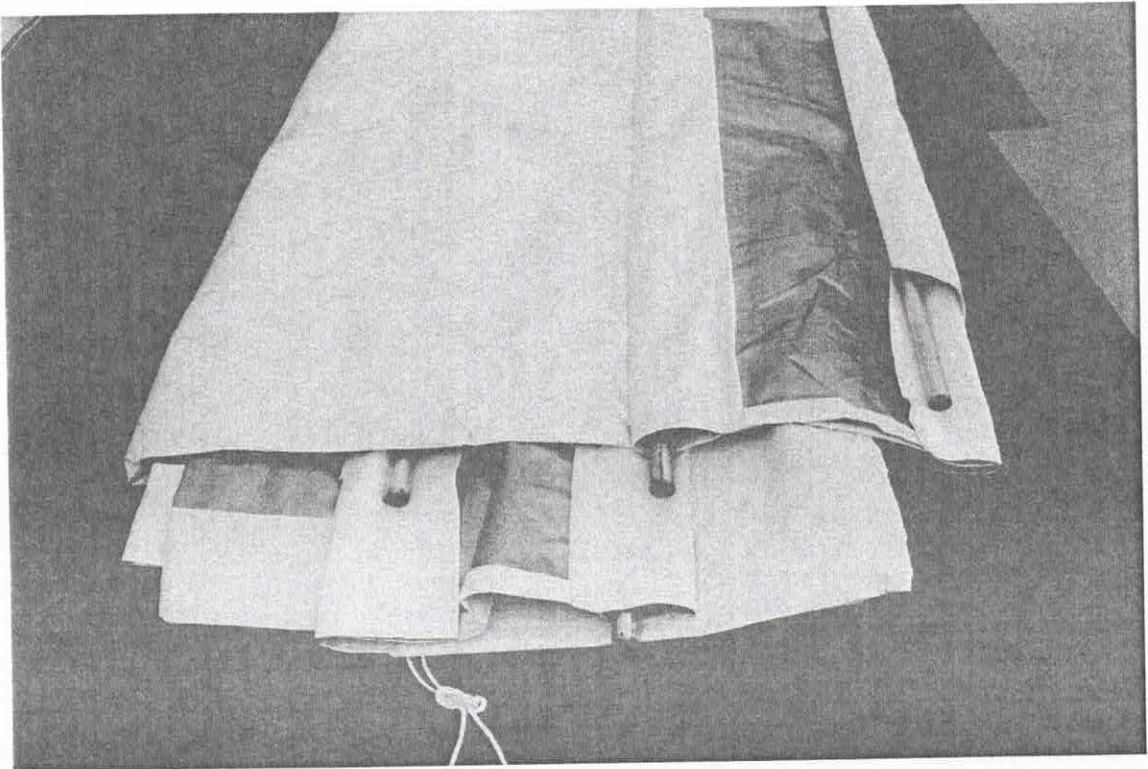
INSERTING TARP PIPES



EXPLODED DIAGRAM WITH TARP-PIPES INSIDE TARP

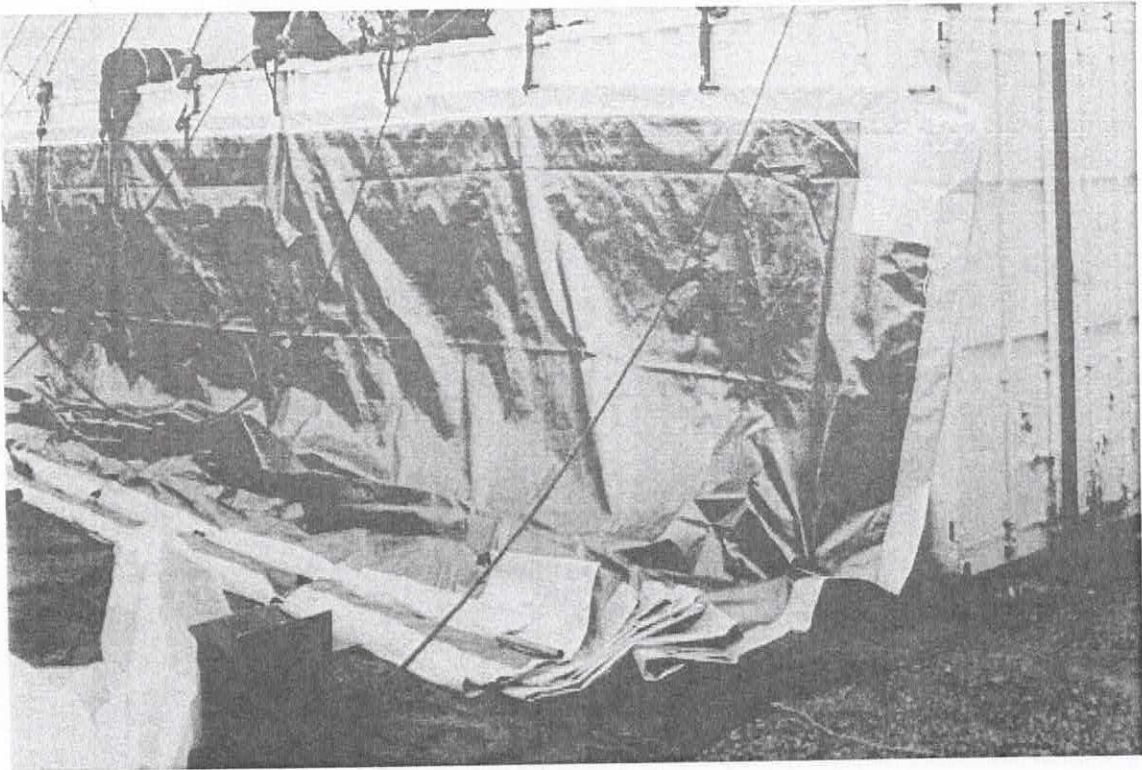


TARP PIPES (TP) THREADED THROUGH THE TARP



- Secure the correct side of the TARP to the MOUNTING BRACKETS with RATCHET STRAPS before pulling it over the frame
- Leave a 500mm gap between the TARP PIPES in the sleeve and the MOUNTING BRACKET.
- Ensure the ratchet has locked onto the strap securely and will not release itself.

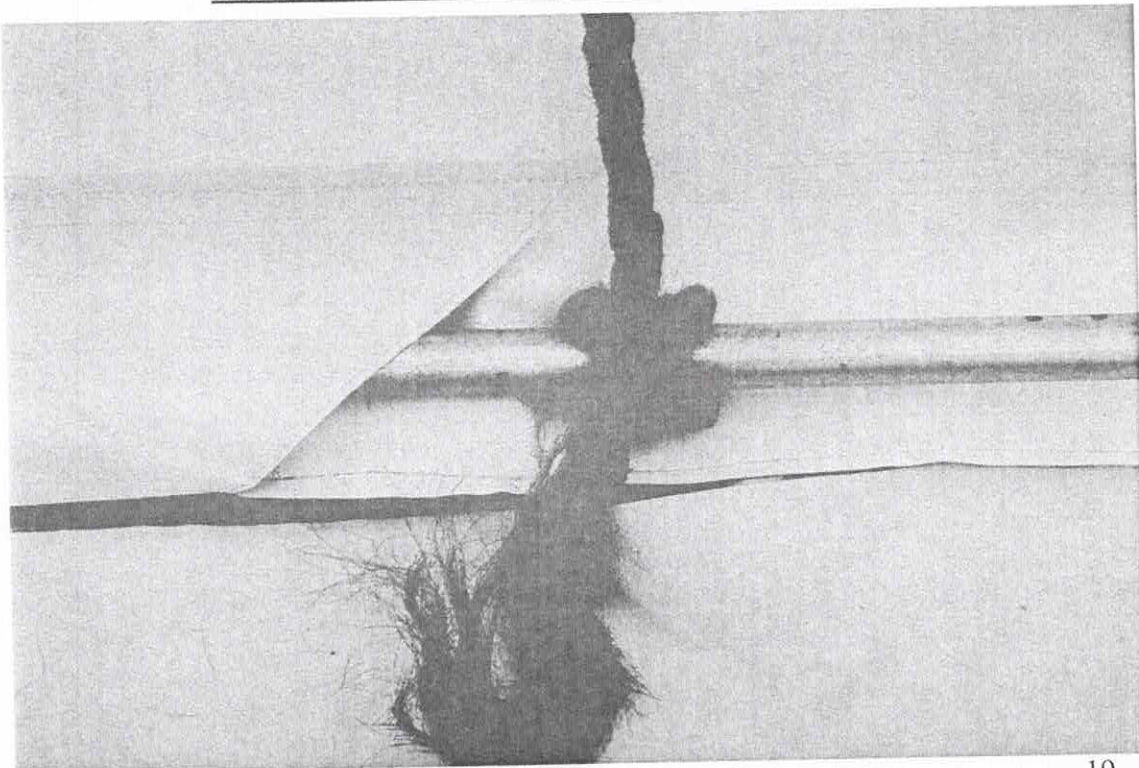
TARP ON GROUND WITH RATCHETS ATTACHED



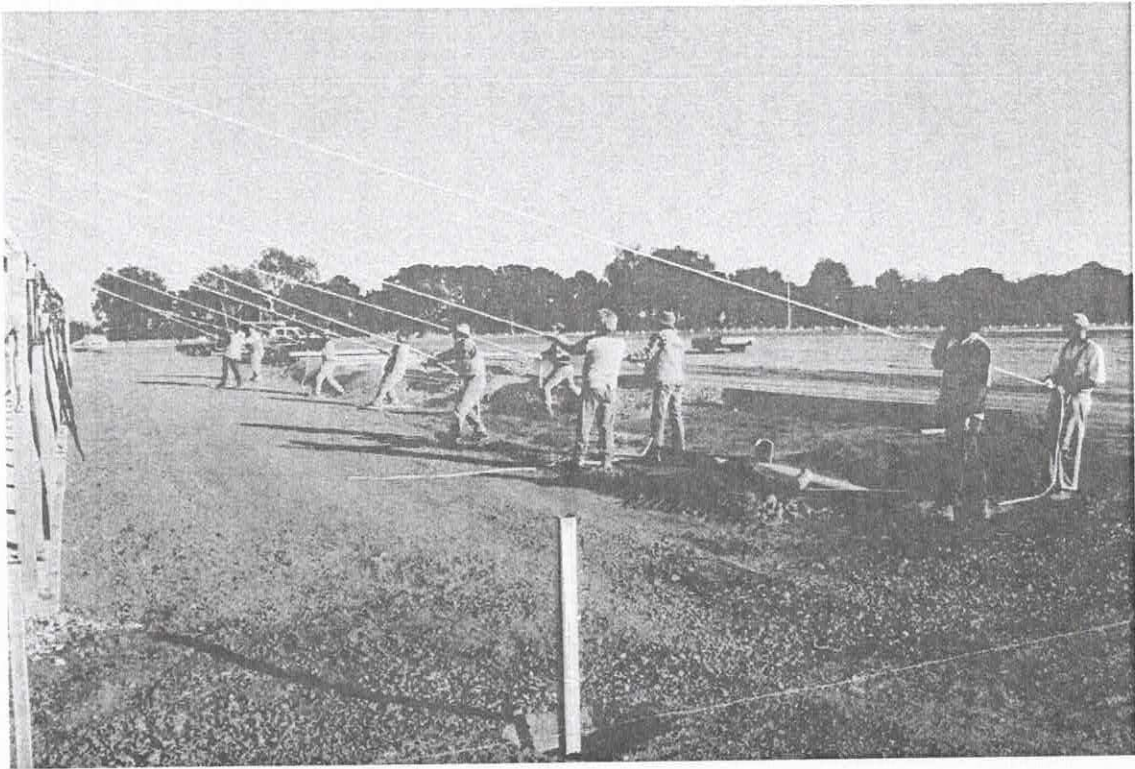
STEP 11:

- Tie the ropes to the correct TARP PIPE and pull the TARP over the frame.
- Have everyone pull evenly and have a person inside the Shelter checking that the TARP is not catching as it is pulled.
- Once the TARP is over, immediately secure it with the RATCHET STRAPS.
- Square the TARP up so both sides are even and leave the RATCHET STRAPS fastened loosely – not tight.

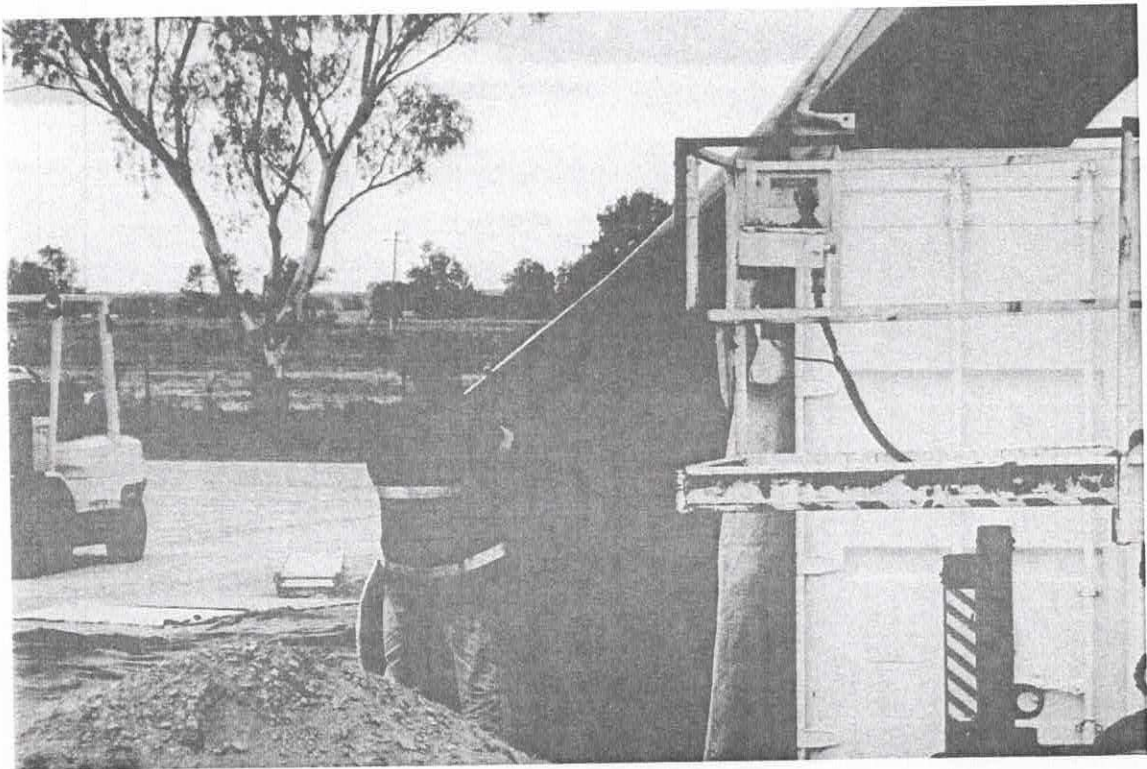
ROPE ATTACHED TO TARP PIPE READY TO PULL



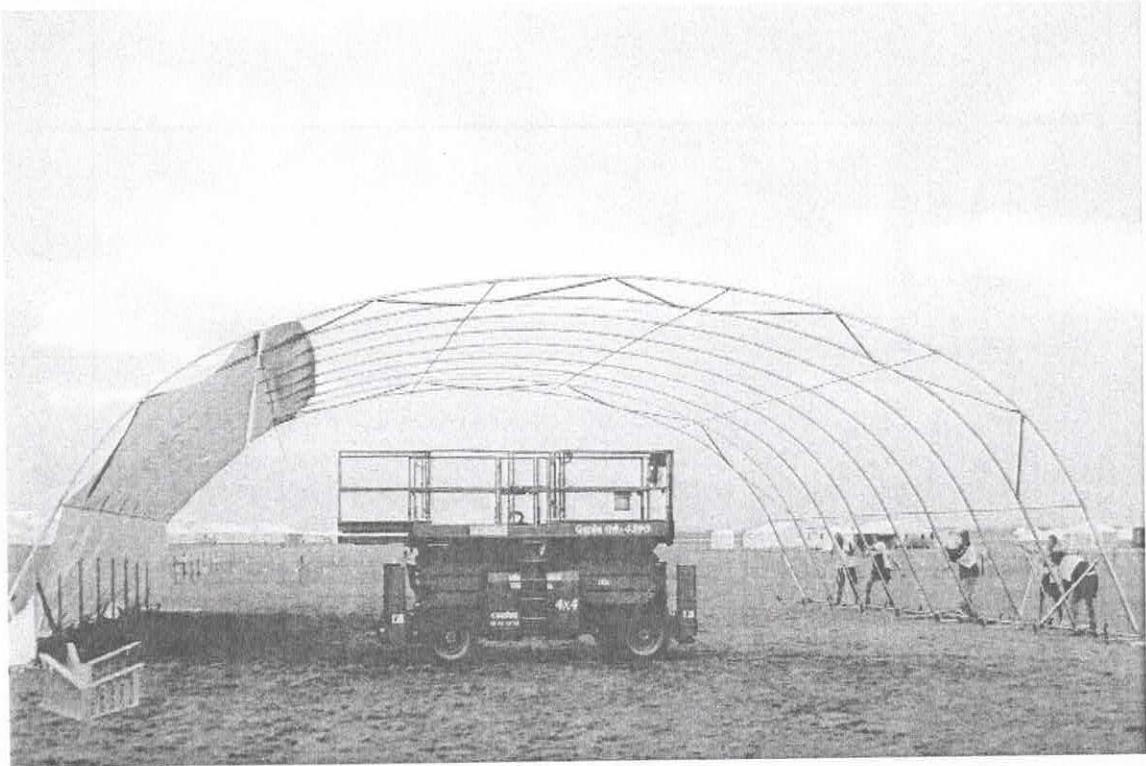
READY TO PULL
(Minimum one rope every 3m)



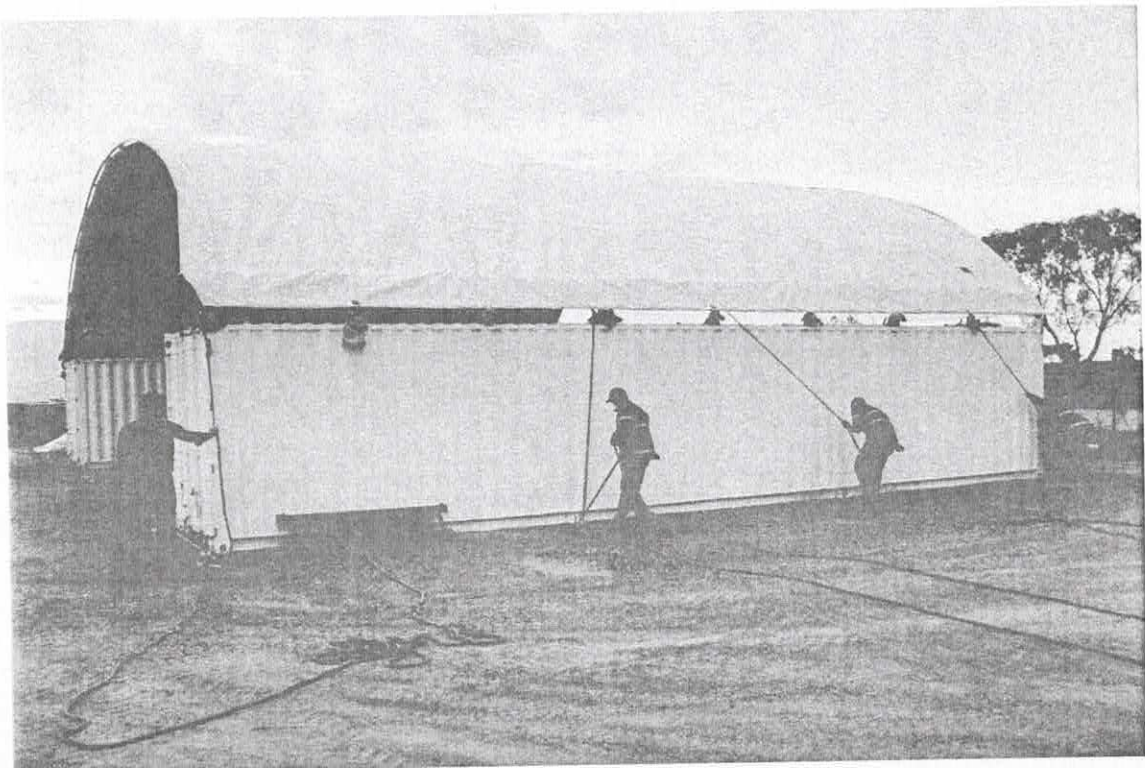
MAKING SURE THE TARP DOES NOT CATCH ON FRAMEWORK



SCISSOR LIFT READY TO USE IF TARP SNAGS WHILST BEING INSTALLED



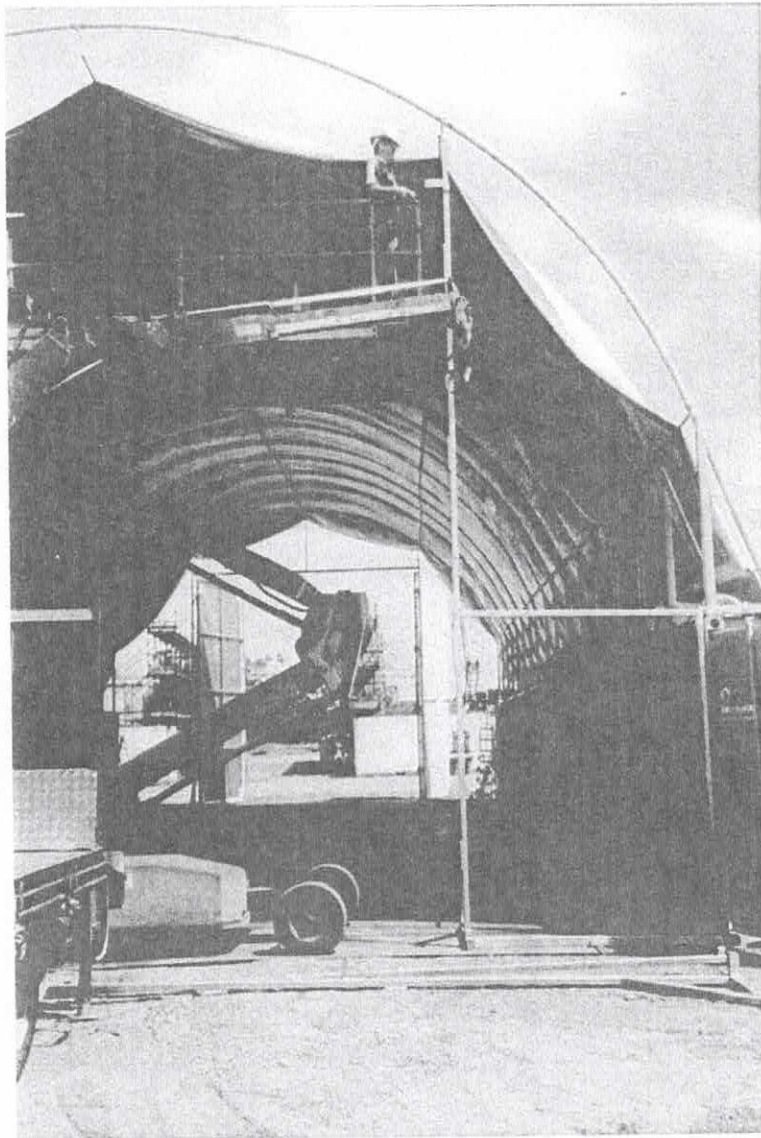
TARP IS TEMPORARILY SECURED WITH ROPES – RATCHETS ARE TO BE INSTALLED ON EVERY BRACKET IMMEDIATELY



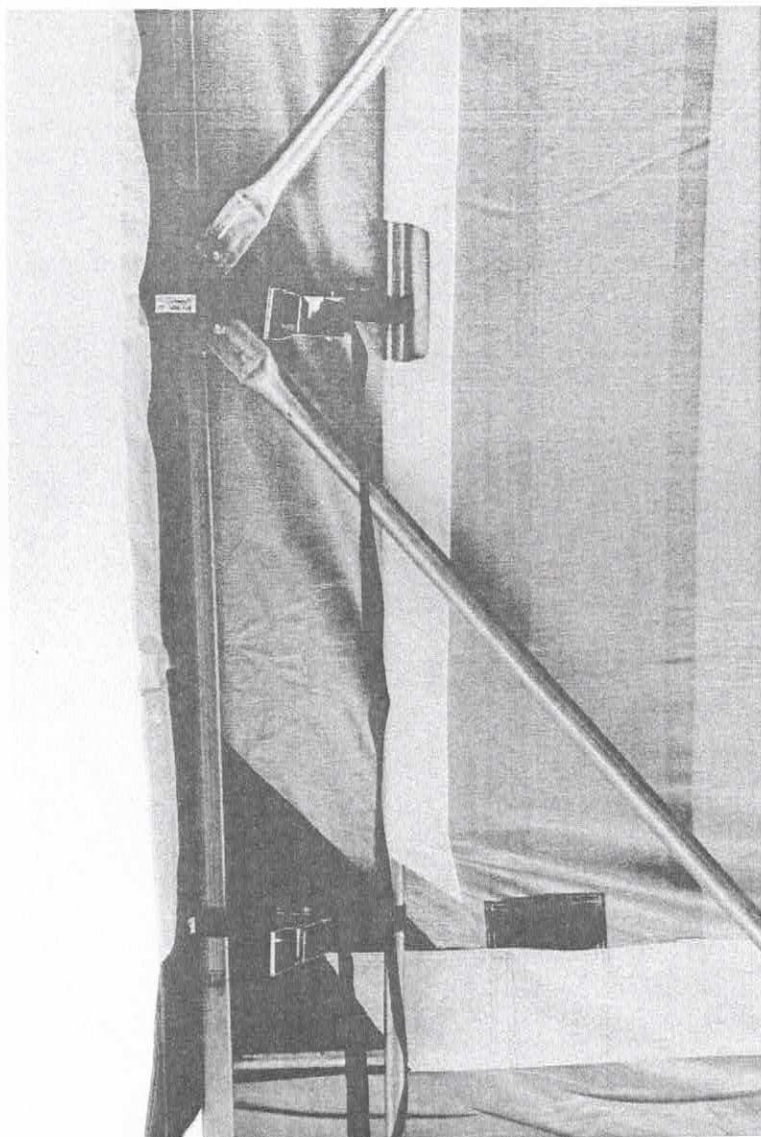
STEP 12:

- Join together the CURVED TARP PIPES (CP) included in the kit which join together to form 2 x lengths.
- These are fed through pockets in the underneath of the TARP.
- Once in place use 362E RATCHET STRAPS to tension the TARP lengthways by looping around the end HOOP and CURVED TARP PIPE then tensioning the Ratchet.
- Be careful not to over tension the TARP or put any un-even pressure on the RATCHET STRAPS that could cause damage to your TARP.

INSTALLING CURVED TENSION PIPES



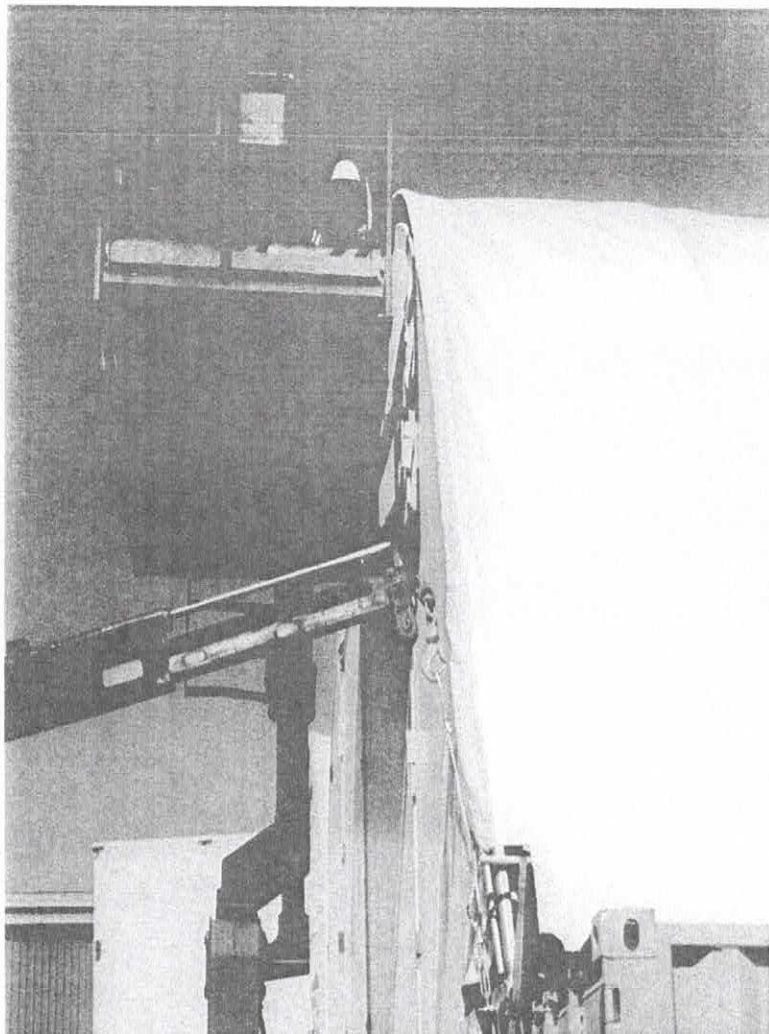
RATCHETS IN PLACE – LENGTHWAYS TENSION ACHIEVED



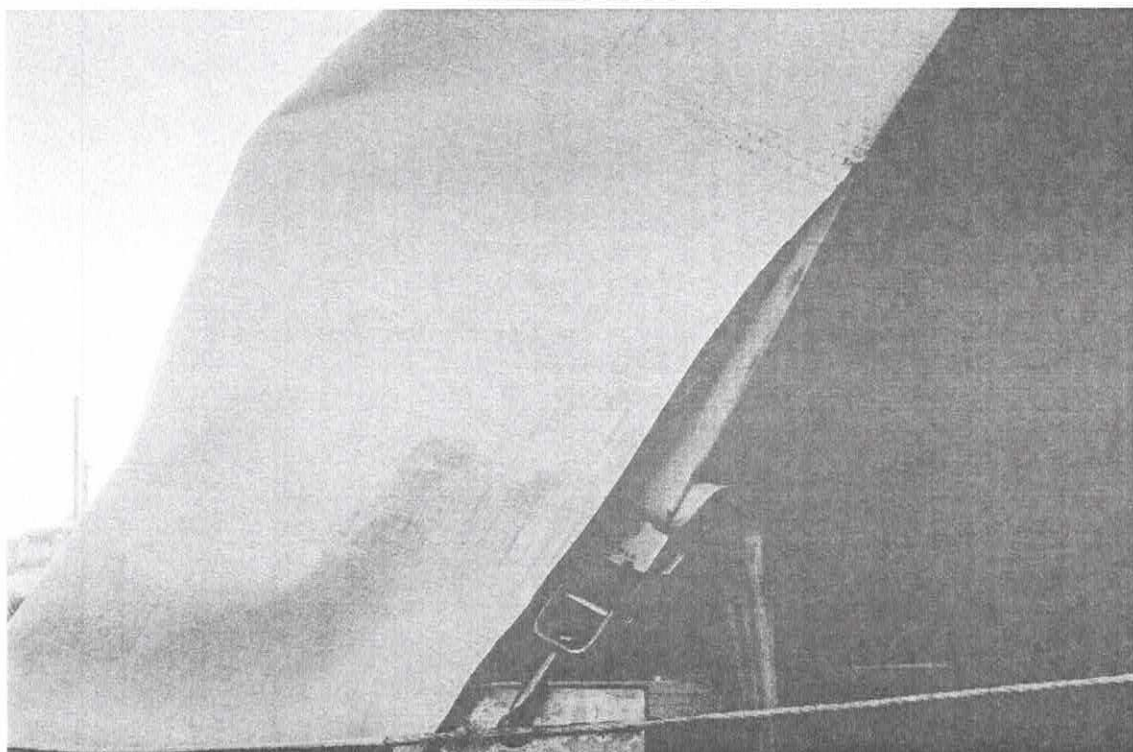
STEP 13:

- Attach the SWIVEL J-HOOK RATCHETS to the corner BRACKETS and tighten up the webbing in the tarp end pockets.
- The TARP is to overhang from the top of the HOOP, evenly over each end.
- Have someone up in the centre of the Shelter helping to ease the tarp over the edge of the frame.

HELPING TO PULL THE TARP OVER THE EDGE OF THE FRAME



SWIVEL J-HOOK RATCHET ATTACHED AND COVER TENSIONED LENGTHWAYS



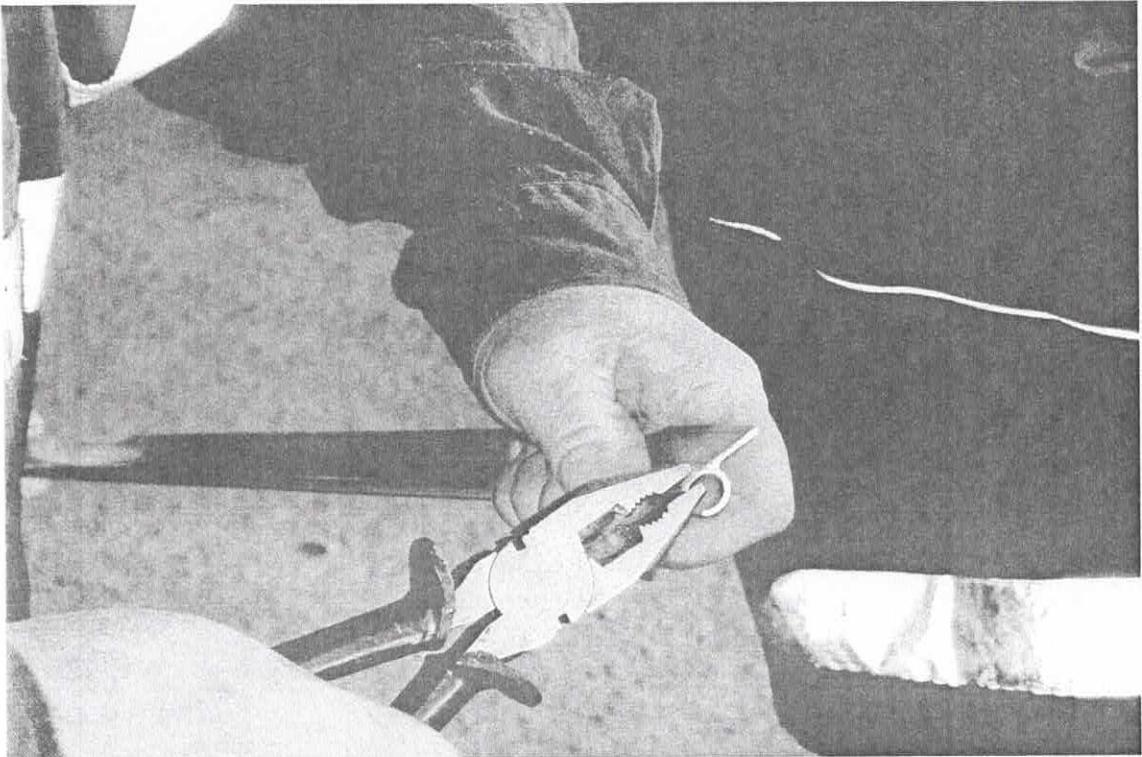
STEP 15:

- Tension the RATCHET STRAPS along the sides of the TARP providing good even tension.
- It is important to have the required TARP overhang both ends before you do this.
- A well tensioned TARP has a longer life span.
- Any wind flap will cause the cover to deteriorate.

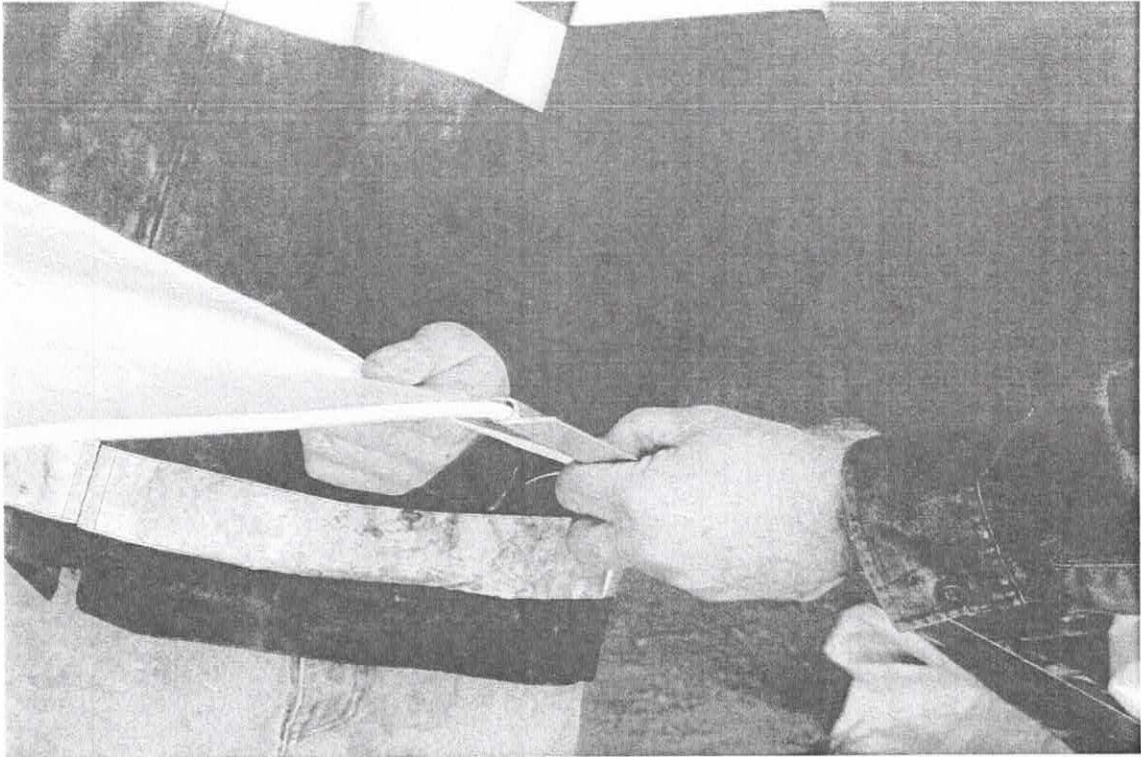
STEP 16:

- Slide the SINGLE EDGED ROPE TRACK over the ROPE EDGE on the TARP flap.
- Tension the flap by hand and fasten it to the Container or Gutter with TEKSCREWS.
- This is crucial for longevity of the TARP.
- Also secure the flap on each corner of the Shelter to stop it flapping.

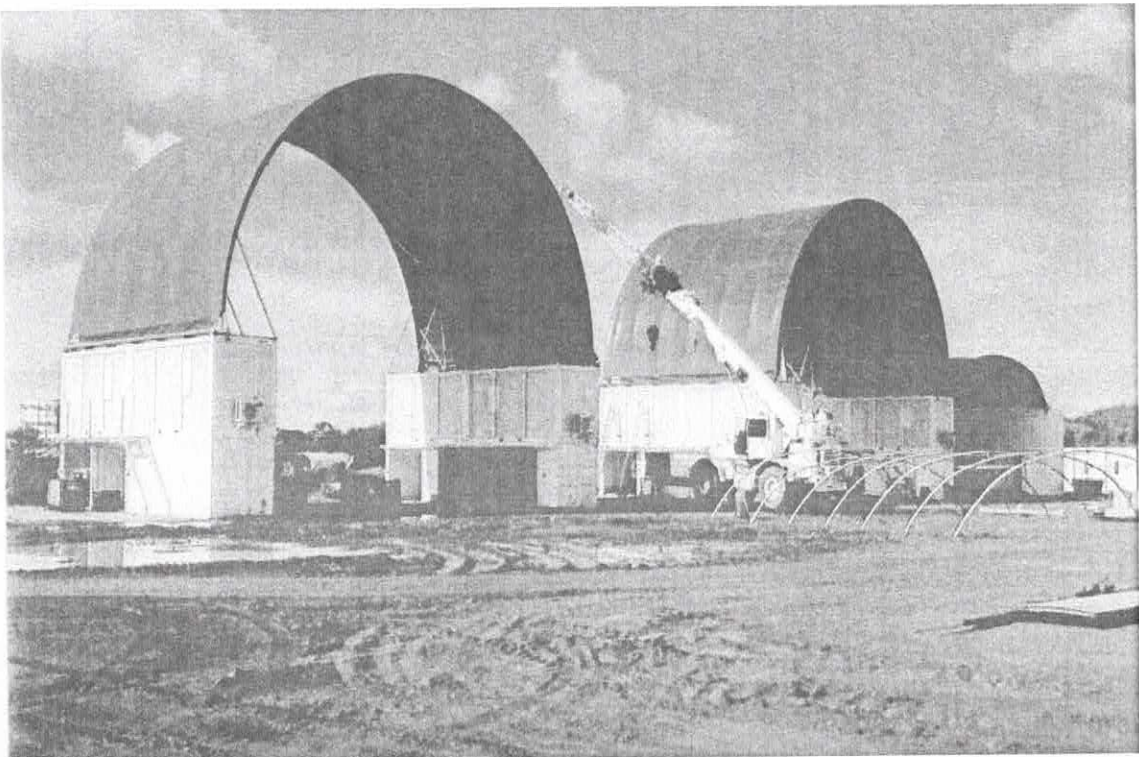
YOU MAY NEED TO OPEN THE ENDS OF THE SINGLE EDGED ROPE TRACK UP SLIGHTLY – IT IS ESSENTIAL THAT THE ENDS ARE SQUEEZED CLOSED AGAIN ONCE IN PLACE!



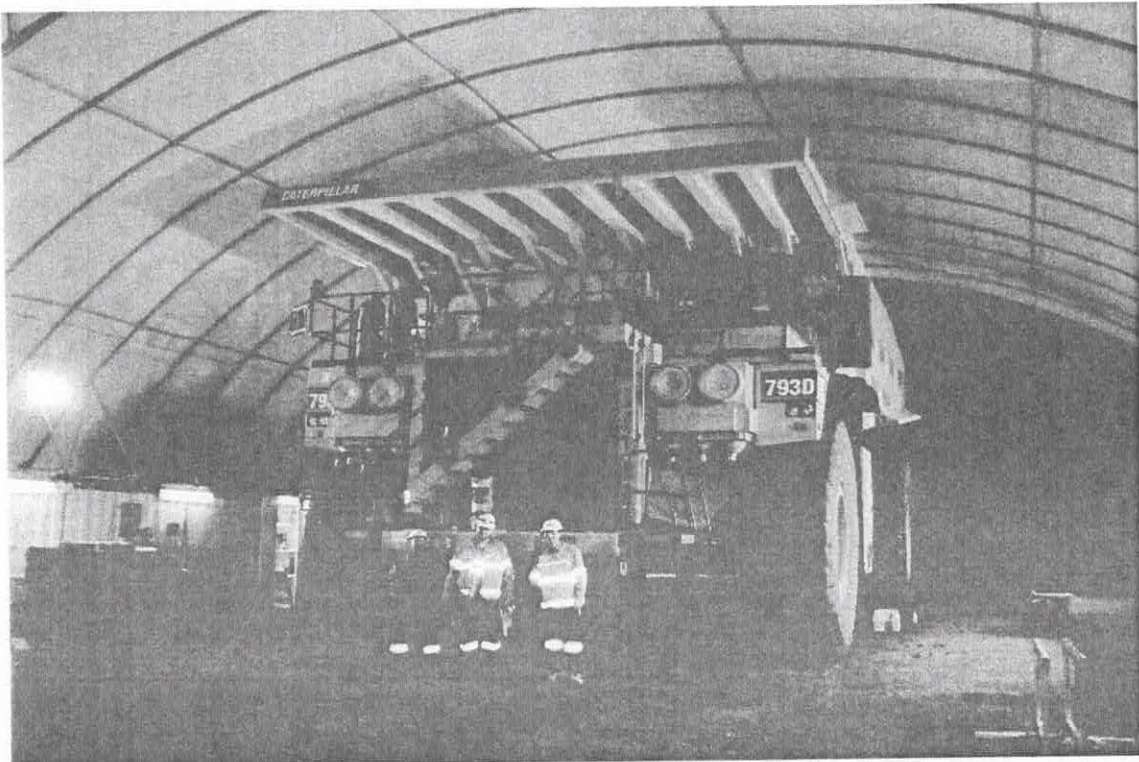
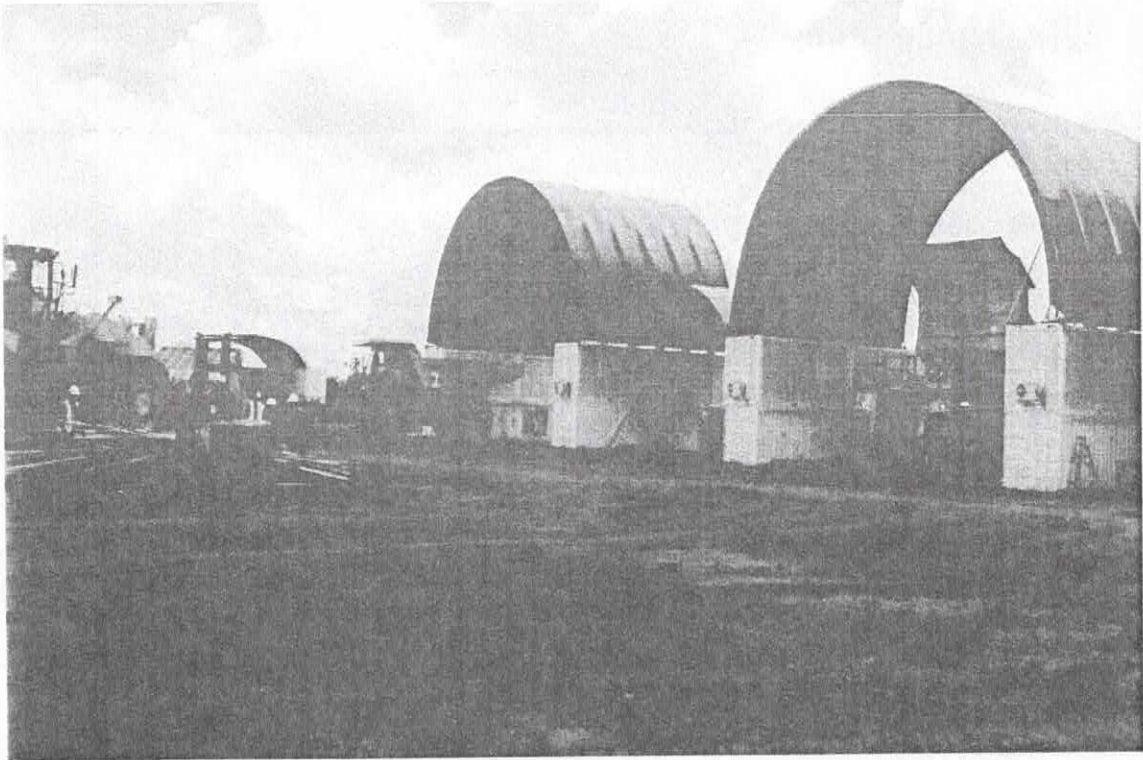
SLIDING SINGLE EDGED ROPE TRACK OVER ROPE EDGE



ONCE YOUR TARP IS IN PLACE – SPEND TIME TENSIONING IT PROPERLY



YOUR SHELTER IS NOW FINISHED!!



Note: Photos shown in this Assembly Instruction Manual may not resemble your supplied Shelter exactly.